

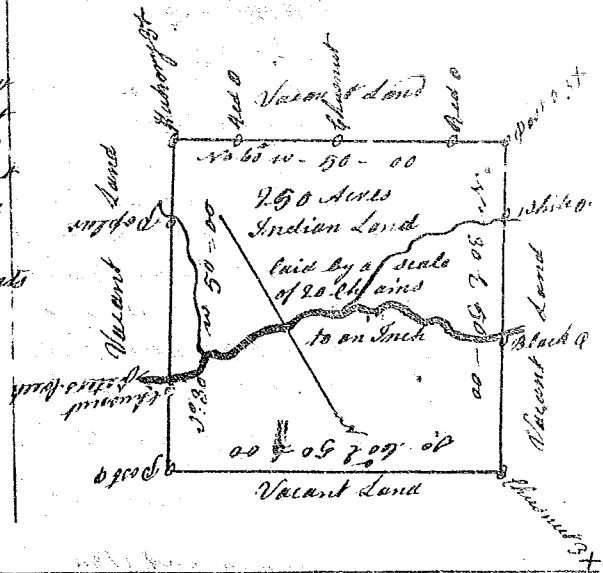
State of South Carolina

(119)

Pursuant to a warrant from John Thomas Commissioner of Locations dated the 21st day of May 1784, I have admeasured and laid out unto Joshua Sanders a tract of land two hundred and fifty acres Land situate in ninety six district on Peters Creek waters of Inocce, bounding on all sides by Vacant Land, and hath such shape and Marks as the above Plat represents

Surveyed the 18th day June 1784

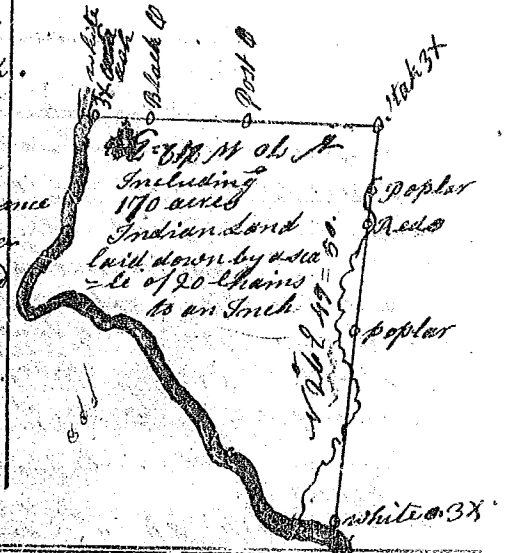
Wm Benson Esq.
Recorded the 6th day Aug: 1784,
Deliv^d. to John Beckham



State of South Carolina

Pursuant to a warrant from John Thomas Commissioner of Locations dated the 21st day of May 1784, I have admeasured and laid out unto James Clayton a tract of one hundred and seventy acres of Land situate in Ninety six District on Saluda River opposite the Confluence of Georges Creek bounding on the said River and on all other sides on Vacant Lands and hath shape and Marks as the above plat represents

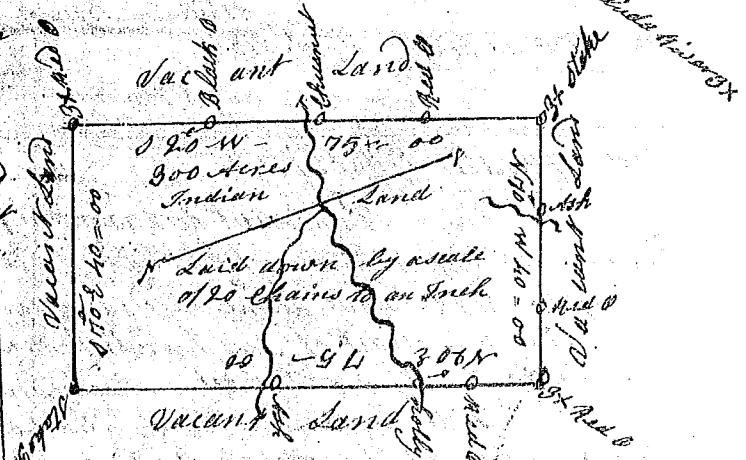
Surveyed the 28th day of June 1784
Recorded the 6th day of August 1784
Wm Benson Esq.



State of South Carolina

Pursuant to a warrant from John Thomas Esq. Commissioner of Locations Dated the 21st day of May 1784 I have admeasured and laid out unto Tom Clayton a tract of three hundred acres Land situate in Ninety six district on the branches of Saluda River bounding on all sides on Vacant Land and hath such shape and Marks as the above plat represents

Surveyed the 28th of June 1784
Wm Benson Esq.
Recorded the 6th day of August 1784



State of South Carolina

Pursuant to a warrant from John Thomas Esq. Commissioner of Locations dated the 21st day of May 1784, I have admeasured and laid out unto John Carr a tract of Ninety Seven Acres Land situate in Ninety six district on Peedy River bounding to the North on Lands laid to Charles Benson and on all other sides by Vacant Land, and hath such shape and marks as the above plat represents

Surveyed the 25th day of June 1784

Recorded the 7th day of Aug: 1784
Wm Benson Esq.

