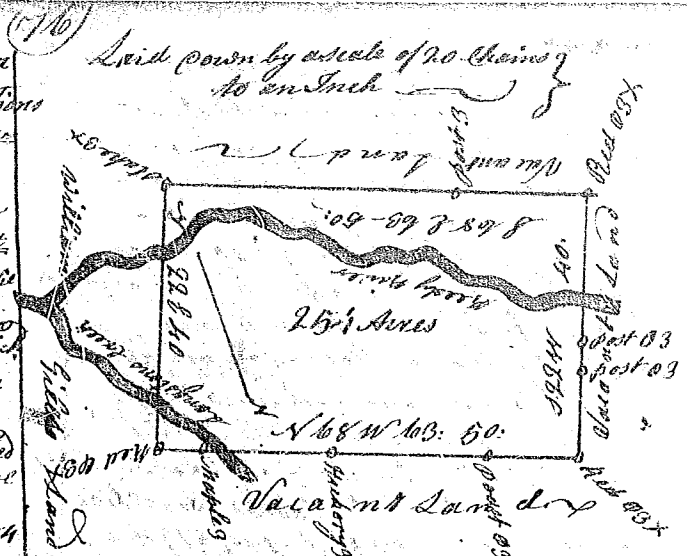


State of South Carolina

Pursuant to a warrant from John Thomas Esq. Commissioner of Locations Dated the 1st of May 1784 I have admeasured and laid out unto Fredrick Hawkins a tract of Land containing two hundred and fifty four Acres situate in Ninety Six district west of the Old Indian Boundary on both sides of a Needy River about four miles above the Parrish's old plantation Bounding on the NE on land laid out for William Giles all other sides on Vacant Land and hath such form and Mark as the above plat represents.

Surveyed the 16 July 1784

Recorded the 5th Aug. 1784 George Salmon D.

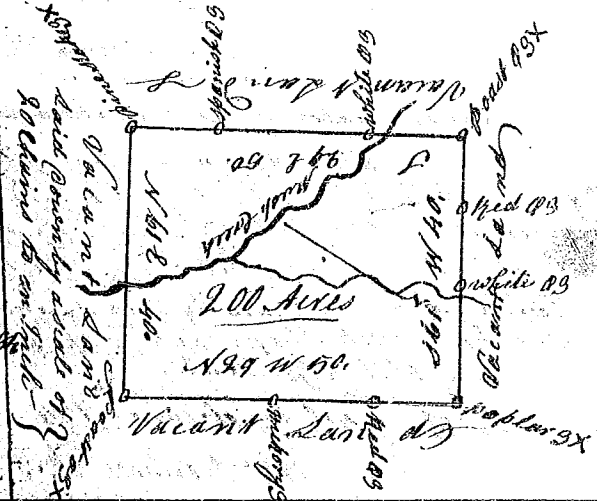


State of South Carolina

Pursuant to a warrant from John Thomas Esq. Commissioner of Locations Dated May the 24th 1784 I have admeasured and laid out unto Philip Sheril a tract of Land containing Two hundred Acres situate in Ninety Six district west of the Old Indian Boundary on both sides of Bush Creek of Tigger River Bounding on all sides on Vacant Land and hath such form and Marks as the above plat represents.

Surveyed the 12 day June 1784

Recorded the 28th day August 1784 George Salmon D.



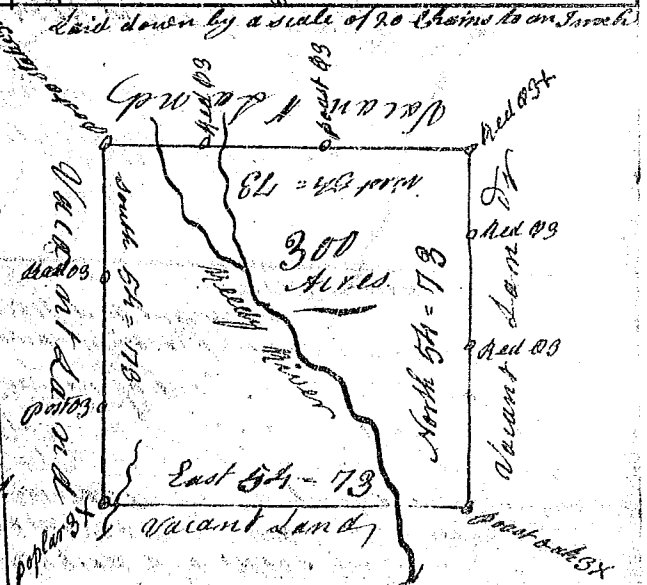
State of South Carolina

Pursuant to a warrant from John Thomas Esq. Commissioner of Locations Dated May 25th 1784 I have admeasured and laid out unto Alexander May a tract of Land containing three hundred Acres situate in Ninety Six District west of the Old Indian Boundary on both sides of Needy River on the lower Indian path Bounding on all sides by Vacant Land and hath such form and Marks as the above plat represents.

Surveyed the 3. day of July 1784

Recorded the 5th day of August 1784

George Salmon D.



State of South Carolina

Pursuant to a warrant from John Thomas Esq. Commissioner of Locations dated 25th day of May 1784 I have admeasured and laid out unto Henry Prime a tract of One hundred Acres of Land in Ninety Six district in the north branch of the North fork Tigger River Bounding South west on land laid out to John Prime and on all other sides on Vacant Land and hath shape and Mark as the above plat represents.

Surveyed the 2. day of July 1784

Recorded the 6th day of August 1784

Wm. Benson D.

