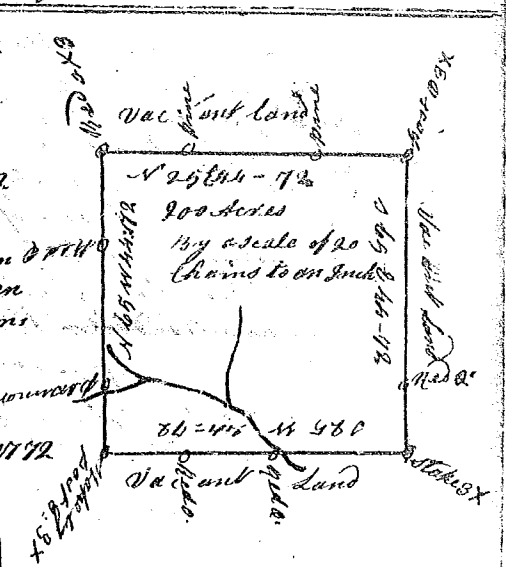


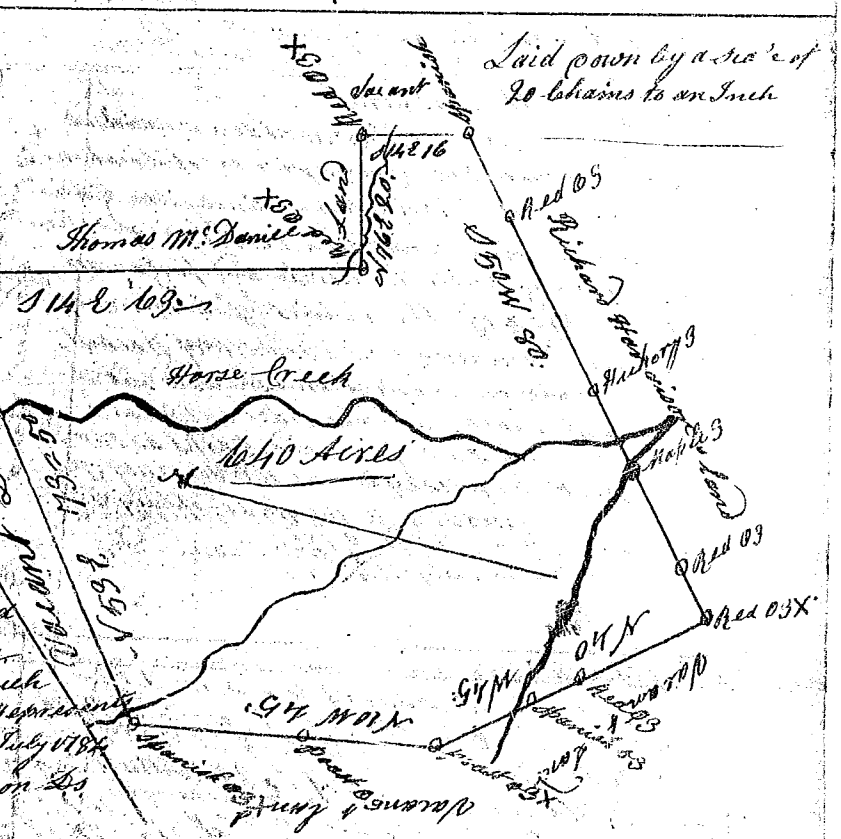
South Carolina
 Pursuant to precept directed under the
 hand and seal of John Brainerd Esq. Deputy Surveyor genl.
 dated the 17th day of January 1784

South Carolina
 Pursuant to a precept
 under the hand and seal
 of John Brainerd Esq. Deputy
 Surveyor genl. dated the
 19th day of November 1782
 I have admeasured and
 laid out unto David
 Templeton a plantation of 200
 Acres



or tract of land containing two hundred acres in Green
 County situate lying and being on a branch of Ferguson's
 Creek the waters of Sugar River and bounded on all
 sides by vacant lands and hath such shape form and
 marks as the above plat represents.
 Certified under my hand this the 23^d December 1782
 Recorded the 6th August 1784 James Wofford Esq.
 Deliv. to Henry Earnest

State of South Carolina
 Pursuant to an warrant
 from John Thomas Esq. Commissioner
 of Locations Dated May 24th 1784
 I have Admeasured and laid
 out unto John Earle sen. a
 tract of land containing
 six hundred and forty acres
 situate in Ninety six district
 west of the old Indian bound
 ary on both sides of horse
 Creek of Needy River about one
 mile and a half about the old
 boundary line bounding S.E. and
 N.E. on land laid out for Thomas
 M. Daniel and on S.W. on land laid
 out for Richard Harrison all other
 sides on vacant land, and hath such
 form and marks as the above plat represents.
 Surveyed the 9th day of July 1784
 Recorded the 5th day
 of August 1784 George Salmon Esq.



State of South Carolina
 Pursuant to a warrant from John Thomas
 Esq. Commissioner of Locations Dated the 22^d May 1784 I have
 Admeasured and laid out unto Robert McCall a tract of land
 containing two Hundred Acres situate in Ninety six district
 west of the old Indian Boundary on both sides of Mountain
 Creek of Snowe River bounding on all sides on vacant
 Land, and hath such form and marks as the above plat
 represents. Surveyed the 24th day of June 1784
 Recorded the 5th day of August 1784
 George Salmon Esq.

