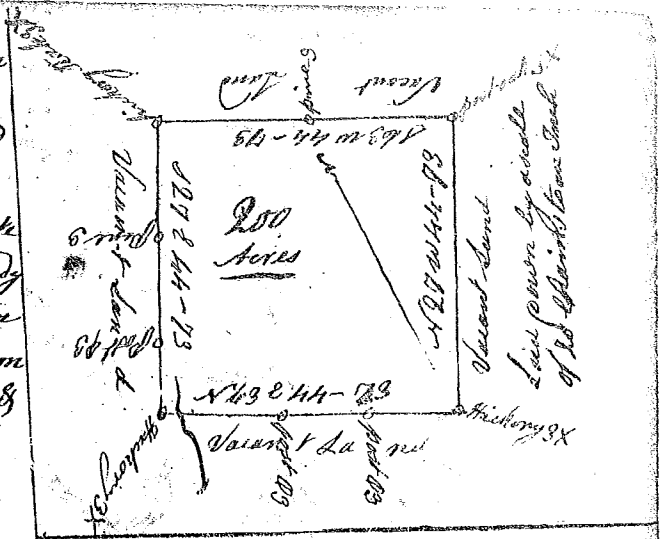


State of South Carolina

(65)

Pursuant to a warrant from John Thomas Esq. Commissioner of Locations dated May the 21st 1784 I have admeasured and laid out unto Stephen Ford Junr. a tract of land containing Two hundred acres situate in Ninety six District on the branches of Needy River about two miles above the poplar bottom west of the old Indian Boundary, Bounded on all sides by Vacant Land and hath such forms & marks as the above plat represents,

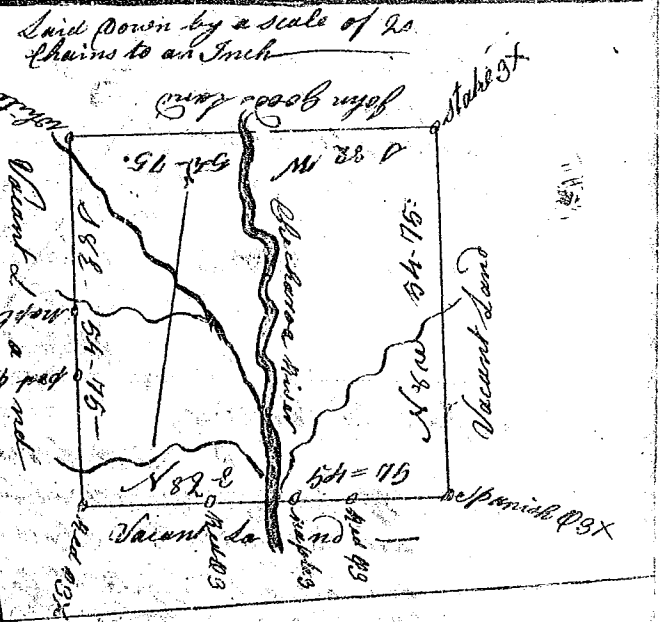
Surveyed the 14th of June 1784
 George Salmon D.S.
 Recorded the 31st July 1784



State of South Carolina

Pursuant to a warrant from John Thomas Esq. Commissioner of Locations dated the May 24th 1784, I have admeasured and laid out unto William Colchins a tract of land containing Three hundred acres situate in Ninety six District west of the old Indian Boundary on both sides of Checharoa River of Saluda Bounding on the S.W. on land laid out for John Ford, all other sides on Vacant Land and hath such forms and Marks as the above plat represents,

Surveyed the 13th day June 1784
 George Salmon D.S.
 Recorded the 31st July 1784



State of South Carolina

Pursuant to a warrant from John Thomas Esq. Commissioner of Locations dated the 21st day of May 1784, I have admeasured and laid out unto Hephziah Rice a tract of land containing Three Hundred acres of land situate in Ninety six District west of the old Indian Boundary line about one mile below Rich. partridge Old plantation on both sides of Needy River Bounding S.W. on land laid out for William Brandon, all other sides on Vacant Land, and hath such forms and Marks as the above plat represents,

Surveyed the 31st of May 1784
 George Salmon D.S.
 Recorded the 31st July 1784

