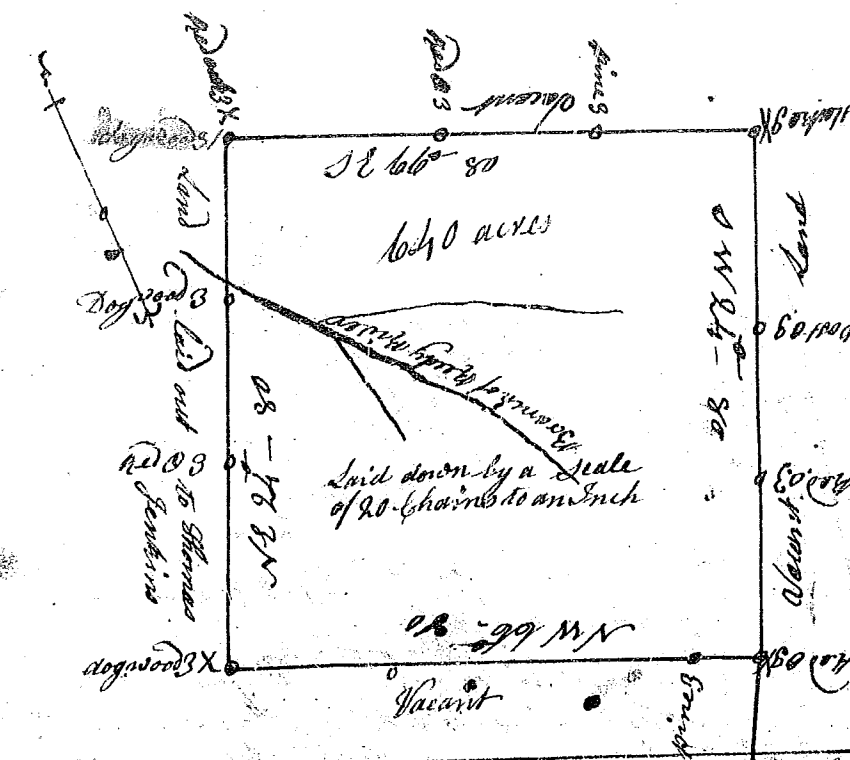
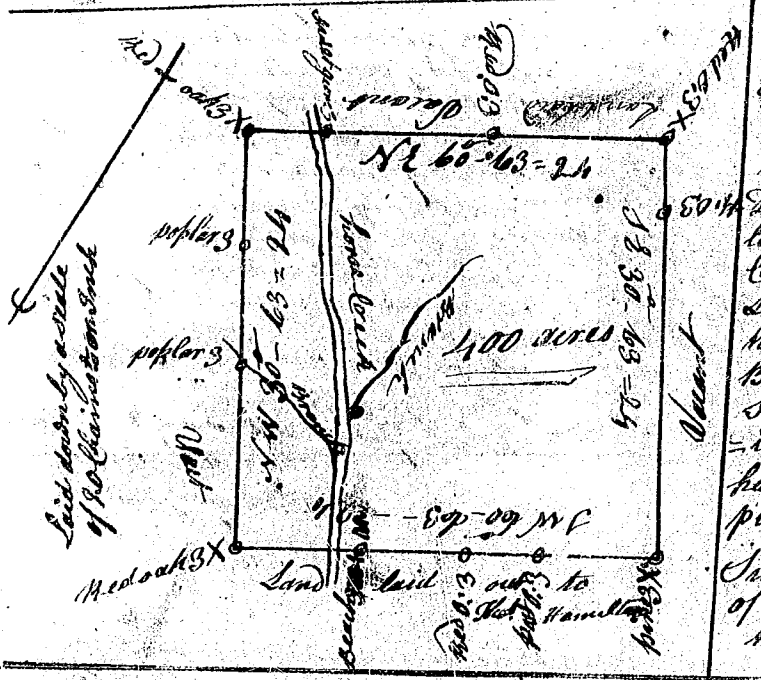


South-Carolina
 Pursuant to a warrant to me directed under the hand and seal of John Thomas Esq. Commissioner of Locations for the 96 district north of Saluda River dated the 21st of May 1784 I have admeasured and laid out unto Henry Tommons a tract of land containing six hundred and forty acres situate lying & being in the District north of Saluda river on the waters of Reddy river bounding on the N.E. by land laid out to Thomas Jenkins all other sides on vacant land & hath such shape form & marks as the above plat represents
 Surveyed the 27th day of May 1784
 Recorded the 14th July 1784
 Deliv^d. to Lewis



South-Carolina
 Pursuant to a warrant to me Directed under the hand and seal of John Thomas Esq. Commissioner of Locations for ninety six district north of Saluda River Dated the 1st May 1784 I have admeasured and laid out unto Mary Milling a tract of land containing four hundred acres situate lying and being in ninety six district north of Saluda River on horse-creek a branch of Reddy River bounding on the SW side on land laid out to Thomas Hamilton all other sides on Vacant Land and hath shape form and marks as the above plat represents,
 Surveyed the 18th day of July 1784
 Recorded the 14th July 1784
 Thomas Lewis D.S.



South-Carolina
 Pursuant to a warrant to me directed under the hand and seal of John Thomas Esq. Commissioner of Locations for the district of ninety six north of Saluda River dated 21st of May 1784 I have admeasured and laid out unto Charles Simmons a tract of Land containing one hundred and sixty eight acres situate lying and being in ninety six district north of Saluda River on Reddy River bounding on the N.E. on lands laid out unto George Martin on the S.E. on Vacant on the SW on Reddy River and hath such form shape and marks as the above plat represents
 Surveyed the 28th day of May 1784
 Recorded the 14th July 1784
 Deliv^d. to Lewis

