

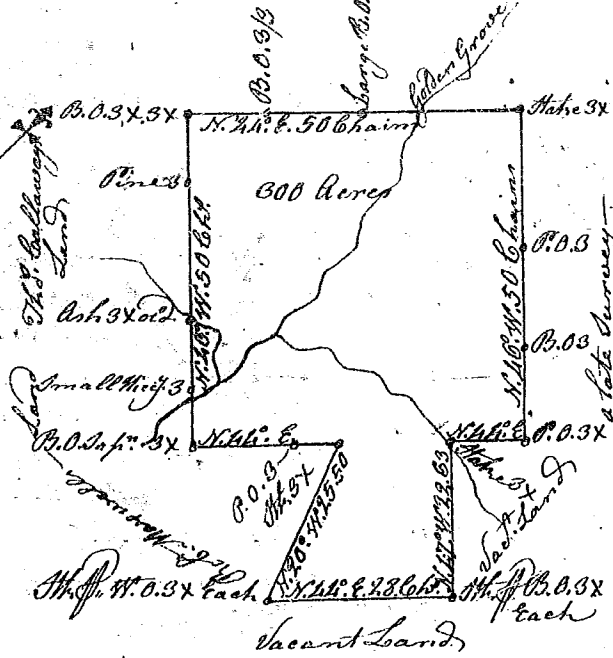
25) South Carolina

Land surveyed for Joseph Reid

Pursuant to a Warrant

from John Thomas Esquire Commissioner of Locations in the District of Ninety Six bearing date the 21st Day of May 1784 I have Admeasured and laid out unto John Thomas a Tract of Land containing Three Hundred Acres above the ancient boundary line Situate on the Golden Grove a Branch of Saludy River, butting and bounding to the N. W. on Land surveyed for Joseph Reid, to the N. E. on a late Survey and vacant Land, to the S. E. partly on vacant Land and partly on Land surveyed for Robert Maxwell, to the Westward and S. W. on said Robert Maxwell Land and Land surveyed for Thomas Callaway and hath such form and marks as the above Plat

Laid down by a scale of 720 Chains to an Inch



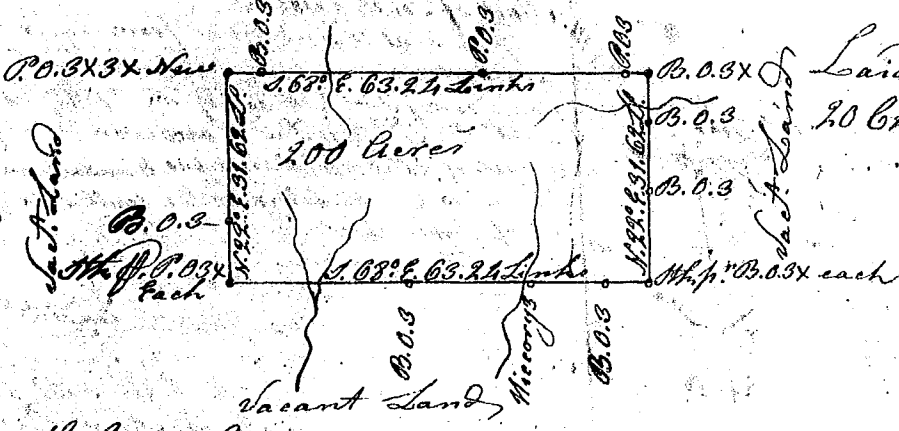
Recorded the 7th Day of July 1784
Delivered to John Bowie

Represented
Surveyed the 3rd Day of June 1784
John Bowie D. S.

Land surveyed for J. Shirley

Laid down by a scale of 720 Chains to an Inch

Laid down by a scale of 720 Chains to an Inch



South Carolina Pursuant to a Warrant from John Thomas Esquire Commissioner of Locations in the District of Ninety Six bearing date the 21st Day of May 1784, I have Admeasured and laid out unto Robert Maxwell a Tract of Land containing Two Hundred Acres above the ancient boundary line, Situated on Branches of the Golden Grove Creek and Saludy River butting and bounding to the N. E. and S. E. on Land surveyed for James Shirley and all other sides on vacant Land and hath such form and marks as the above Plat represents.

Recorded the 7th Day of July 1784
Delivered to Robt. Maxwell

Surveyed the 2nd Day of June 1784
John Bowie Depy. Surv.