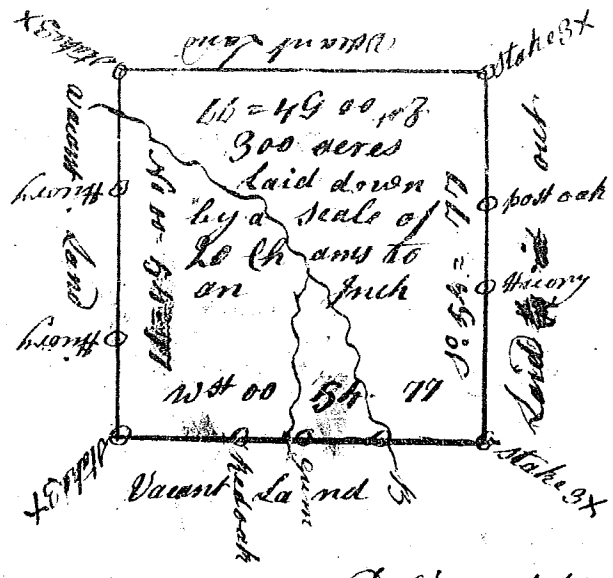


State of South Carolina

Pursuant to a warrant from John Thomas Esq<sup>r</sup> Commissioner of Locations dated the 21 day of May 1784, I have admeasured and laid out unto James Jorden Esq<sup>r</sup>, a Tract of Land situate in ninety six district on the branches of Needy River NW. of the ancient Boundary line bounding S<sup>e</sup>. on land laid out to Charles Littleton and on all other sides by Vacant Land containing three Hundred acres and hath shape and Marks as the above plat represents,

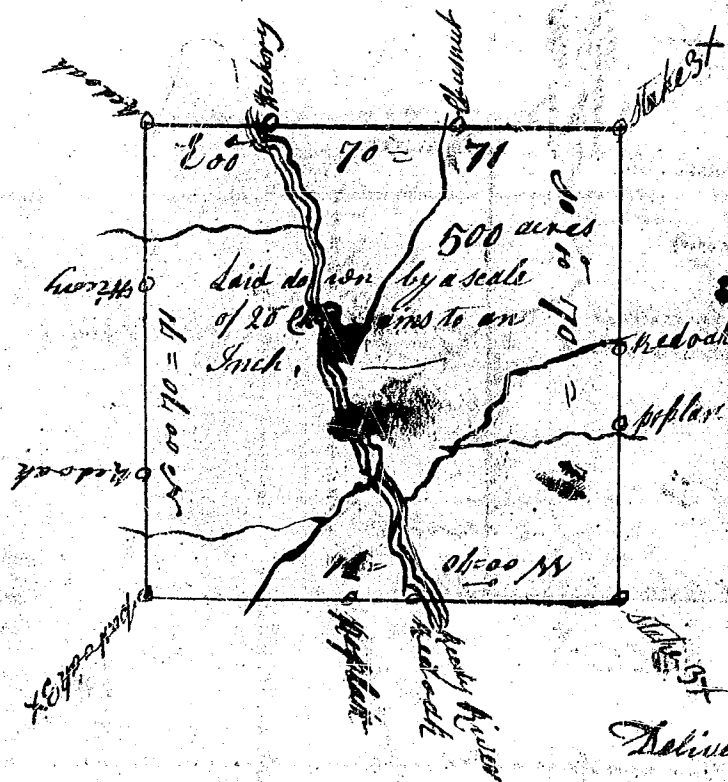
Surveyed the 10th day of June 1784  
Delivered to Samuel Earle W<sup>m</sup> Benson Esq<sup>r</sup>,



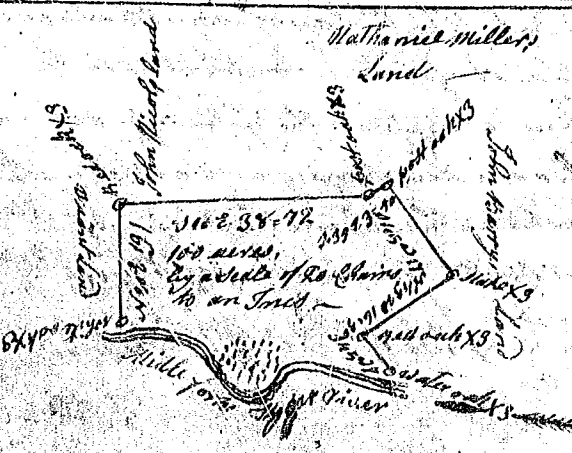
State of South Carolina

Pursuant to a warrant from John Thomas Esq<sup>r</sup> Commissioner of Locations dated the 21 day of May 1784, I have admeasured and laid out unto William Jarrice a Tract of Land situate in ninety six district on the waters of Needy River to NW of the ancient Boundary, containing five Hundred acres bounding on all sides by Vacant Land, and hath such shape and Marks as the above plat represents.

Surveyed the 9th day June 1784  
W<sup>m</sup> Benson Esq<sup>r</sup>.



Delivered to Samuel Earle



State of South Carolina, pursuant to a precept Directed unto the hand and seal of John Barrar Esq<sup>r</sup> deputy surveyor gen<sup>l</sup> do the 17th day of January 1771, I have admeasured and laid out unto Brin W<sup>m</sup> Barry a plantation or Tract of land containing one hundred acres in Craven County, situate lying and being on the north side of the middle fork of Needy River, and bounded southwardly by said river, and bounded eastwardly by John Miller's land and bound southwardly by Nathaniel Miller and John Barry's land, and bound on all other sides by Vacant Land and hath such shape form and mark as the above plat represents,

Certified under my hand for the 10 day of June 1771,  
James Wofford Esq<sup>r</sup>.

A confirmation made in my office agreeable to an act of assembly passed 21 March 1784 by John Wofford,