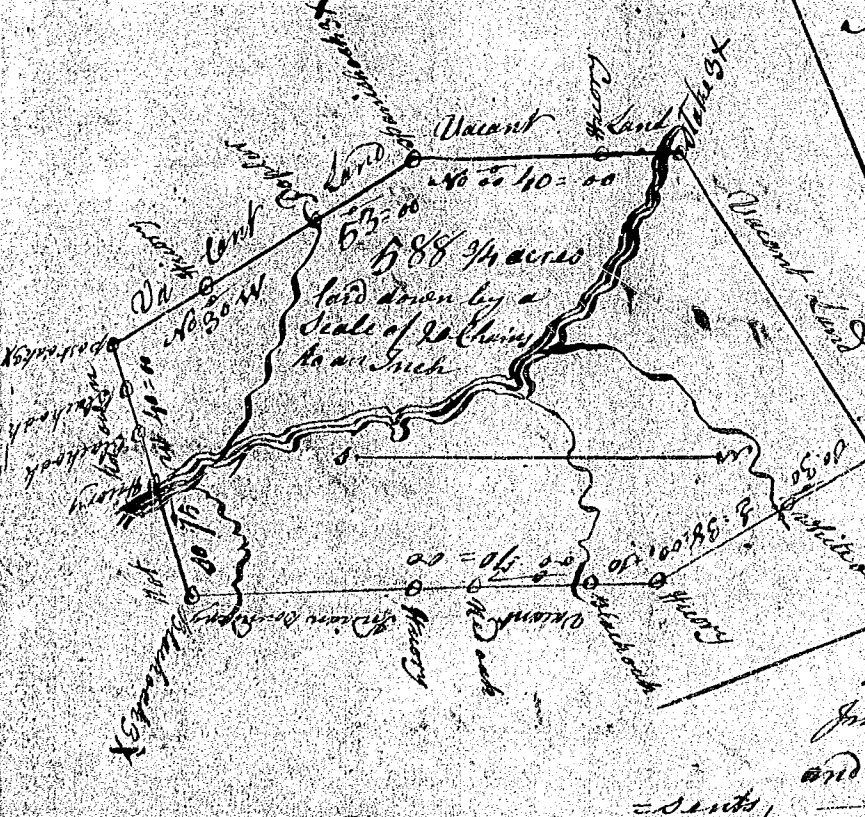


State of South Carolina
 Pursuant to a warrant from John Thomas Esq. Commissioner of Locations, I have admeasured and laid out unto Bayliff Verla Esq. a tract of Six hundred and forty acres of land, situate in Ninety six district, on both sides of Needy river, NW ancient boundary, bounding to S.W. of Land laid out Joseph Atkinson Esq. and all other sides by Vacant Land including Stephen Gord's Improvement, and both such and marks as the above plat represents,
 Surveyed this 9th day of June 1784
 Wm. Benson Esq.



State of South Carolina
 Pursuant to a warrant from John Thomas Esq. Commissioner of Locations, Dated the 21st day of May 1784 I have admeasured and laid out unto John Henderson a tract of Five Hundred & Eighty Eight three quarters Acres of Land, situate in Ninety six district on Needy river bounding to NW ancient boundary &c. on lands not owned by Vacant Land including George Martin, William Martin Charles & allingear's Improvements and both such marks and marks as the above plat represents,
 =sents,
 Surveyed the 16th Day of June 1784. — Wm. Benson Esq.