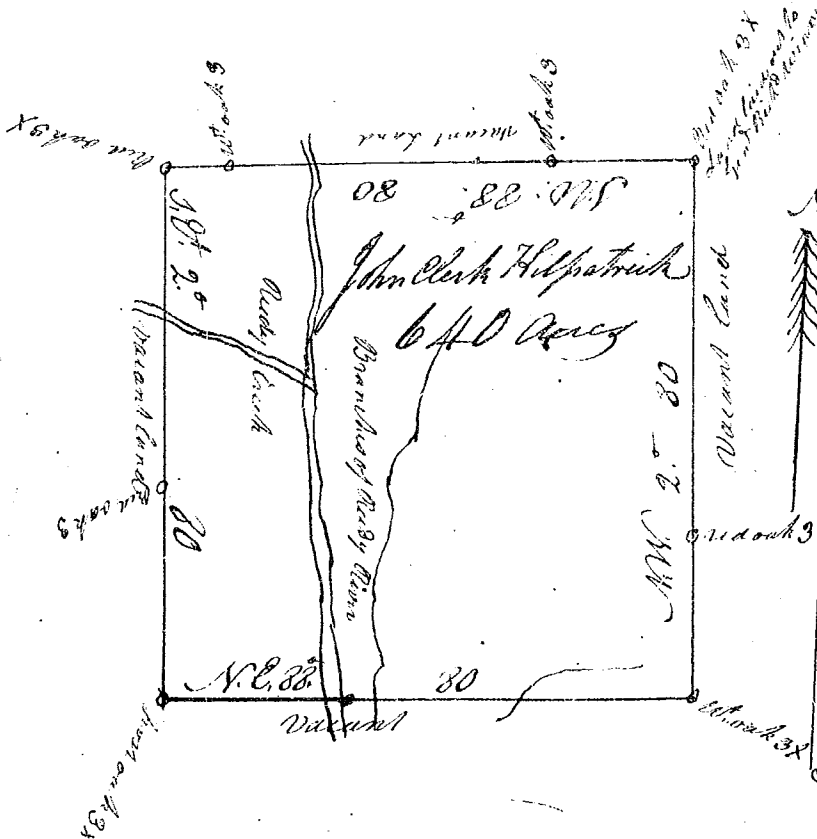
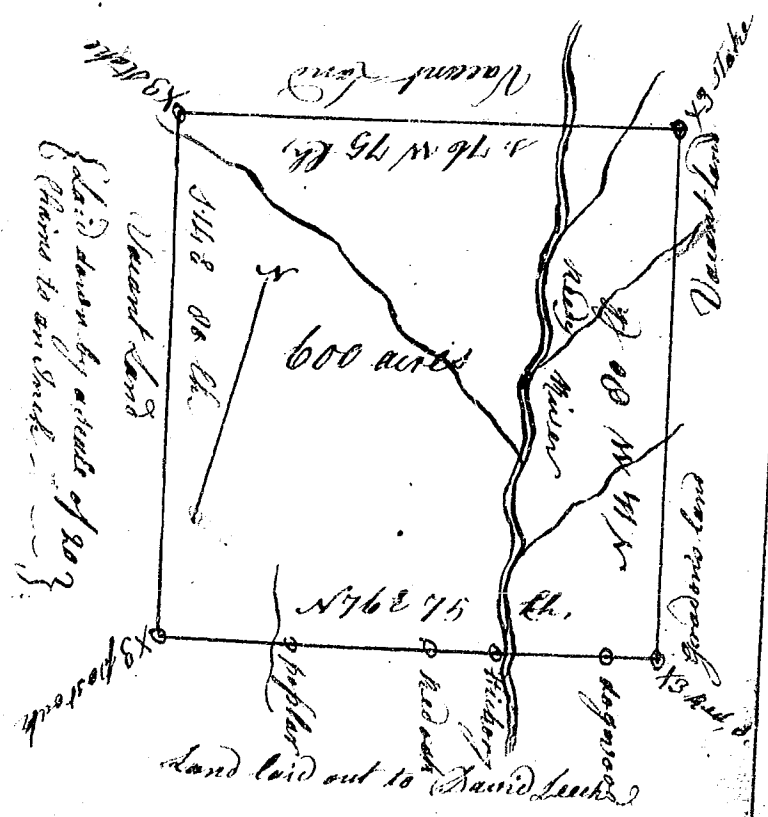


South Carolina



Pursuant to a
~~...~~ receipt to me directed
 under the hand & seal of John
 Thomas Esq. Commissioner
 of Locations in Ninety six districts
 North of Saluda River, dated
 the 21st day of May 1784
 I have admeasured & laid out
 unto John Clerk Hilpatrick a
 tract of land containing six
 hundred & forty acres. Situate
 in the district aforesaid lying
 & being on the branches of Reddy
 River & Reddy Creek of Saluda
 River bounding on the N. E. corner
 on land laid out to Gen. Richard
 Winn, all sides on vacant land
 & hath John Thomas Esq. Surveyor
 as the above plat represents
 Surveyed on the 28th day of
 May 1784
 Thomas Lewis D.S.
 Recorded on the 10th day of
 June 1784

State of South Carolina



Pursuant to a warrant
 from John Thomas Esq. Com-
 missioner of Locations dated May
 11th 1784 I have admeasured and
 laid out unto James Harrison a
 tract of land containing six hundred
 acres situate in ninety six districts
 on both sides of Reddy River of
 Saluda about two Miles above old
 Indian Boundary bounding N. E. on
 Thomas Grants, E. on lands laid
 for David Leech, all other sides Vacant
 and hath such form and markers
 as the above plat represents,

Surveyed the 15th June 1784
 George Salmon D.S.

John Clerk Hilpatrick
 Surveyed by virtue of 20th
 of 1784

Delivered to John Collins