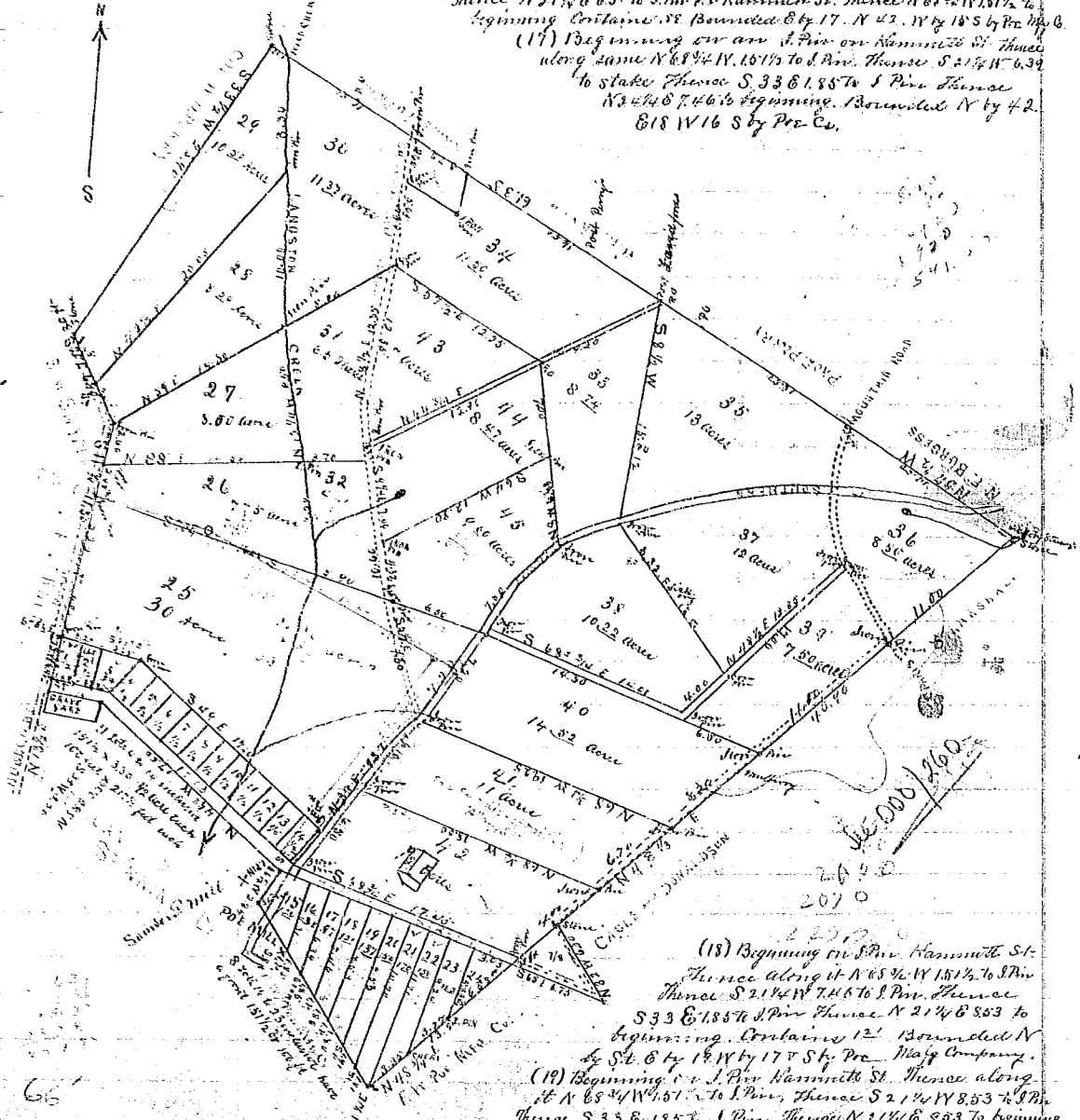


Description of Lots

- (1) Beginning on Iron Pin Cor. Buncombe Road & Hammitt St. Thence S 76° 5' E 167 1/2 to Iron Pin Thence N 13° 5' E 230 to Iron Pin Thence N 76° 4' W 168 to Iron Pin on Buncombe Road Thence S 13° 15' 30 to beginning. Contains 1/2 acre. Bounded N by 28 5/8 ft by Street. (2) Same as 1. Bounded N by 1 E & by 3 contains 1/2 acre.
- (3) Beginning on Iron Pin Thence along Hammitt Street S 76° 4' E 32 to Iron Pin Thence S 49° 6' 45 to S. Pin Thence N 33° 6' 33 to S. Pin Thence N 33° 14' 26 to S. Pin S 13° 15' W 330 to beginning. Contains 1/2 acre. Bounded N by 2 E & by 4 N by 28 5/8 by Street. (4) Beginning on Iron Pin Thence along Hammitt Street S 76° 4' E 32 to beginning bounded N by 28 5/8 by Hammitt St. Contains 1/2 acre 217 1/2 ft. (5) to (14) inclusive all the same as No 4 only the boundaries E & W are changed all to acre. (15) Beginning at Iron Pin Thence S 36° 1/2 W 25 1/2 to stone Thence S 33° E 299 to S. Pin Thence N 21° 4' E 531 1/2 S. Pin Thence along Hammitt St N 65° 1/2 W 230 to beginning. Contains 1 1/2 acres bounded by 4 1/2 E by 16 5/8 by Pre. Co. by 18 by S. Pin Thence S 33° E 180 to S. Pin Thence N 21° 4' E 65 to S. Pin on Hammitt St. Thence N 66° 1/2 W 181 1/2 to beginning. Contains 1/2 Bounded E by 17 N 42 W by 18 5/8 by Pre. Co.
- (17) Beginning on an S. Pin on Hammitt St. Thence along same N 68° 3/4 W 161 1/2 to S. Pin Thence S 21° 1/2 W 639 to stake Thence S 33° E 185 to S. Pin Thence N 21° 4' E 746 to beginning. Bounded N by 4 E 818 W 16 S by Pre. Co.



- (18) Beginning on S. Pin Hammitt St. Thence along it N 65° 3/4 W 181 1/2 to S. Pin Thence S 21° 1/4 W 746 to S. Pin Thence S 33° E 185 to S. Pin Thence N 21° 4' E 553 to beginning. Contains 1 1/2 Bounded N by St. E by 18 5/8 by 17 & St. Pre. May Company.
- (19) Beginning on S. Pin Hammitt St. Thence along it N 68° 3/4 W 161 1/2 to S. Pin Thence S 21° 1/2 W 853 to S. Pin Thence S 33° E 185 to S. Pin Thence N 21° 4' E 803 to beginning. Contains 1 1/2 Bounded N by St. E by 20 W by 18 and S by Pre. May Co.
- (20) Beginning on S. Pin Hammitt St. Thence along it N 65° 3/4 W 181 1/2 to S. Pin Thence S 21° 1/4 W 746 to S. Pin Thence S 33° E 185 to S. Pin Thence N 21° 4' E 553 to beginning. Contains 1 1/2 Bounded N by St. E by 18 5/8 by 17 & St. Pre. May Company.
- (21) Begin at stone Thence N 21° 1/2 E 1171 to S. Pin on Hammitt St. Thence N 68° 3/4 W 181 1/2 to S. Pin Thence S 21° 1/2 W 1070 to S. Pin Thence S 33° E 185 to beginning. Contains 1 1/2 B. E 22 W 20 S Pre. Co.
- (22) Begin at S. Pin Hammitt St. Thence N 68° 3/4 W 181 1/2 to S. Pin Thence S 21° 1/2 W 1171 to Stone Thence N 18° 1/2 E 833 to cherry tree Thence N 21° 1/2 W 824 to beginning. Contains 1 1/2 3 1/2 S W 21 S. Pin. No.
- (23) Begin S. Pin Hammitt St. Thence N 68° 3/4 E 181 1/2 S. Pin Thence S 21° 1/2 W 824 to cherry Thence N 48° 3/4 E 327 S. Pin 635 to beginning. Contains 1 1/2 Bounded E 24 W 22 S Pre. Co. (24) Begin Stone Hammitt St. Thence N 68° 3/4 W 303 to S. Pin Thence S 21° 1/2 W 824 to S. Pin Thence N 48° 3/4 E 658 to beginning. Contains 1 1/2 Bounded N by St. N 23 3/8 Pre. Co.

Description of Small Lots

- (25) Beginning S. Pin on Buncombe Road Thence S 76° 4' E 32 to S. Pin Thence S 49° 6' 45 to S. Pin Thence S 49° 6' 45 to S. Pin Thence along Southern Railway N 38° 6' 16 1/2 to S. Pin Thence having Road N 70° W 224 to S. Pin Thence along Buncombe Road S 17° 3/4 W 52 1/2 to stone Thence S 13° W 310 to the beginning. Contains 1/2 Bounded N by 26 & 4 1/2 E by 16 5/8 S by Hammitt St. Contains 30 acres.
- (26) Beginning at S. Pin on Buncombe Road Thence S 11° W along it 248 to S. Pin Thence S 70° E 160 to S. Pin on branch of S. Pin S 20 to S. Pin Thence S 55° W 166 to the beginning. Contains 1/2 acre B. N. by 27 S by 28
- (27) Begin at S. Pin along Buncombe Road S 11° W 200 to S. Pin Thence N 38° E 145 to S. Pin Thence S 11° W 200 to S. Pin Thence S 69° W 1130 to the beginning. Contains 1/2 acre Bounded N by 28 E 31 by 26 W

(28) i
 Thence
 N 38 E
 S. Pin
 Cor
 (30) B
 N 57
 Thence
 (31) B
 S. Pin
 16 feet
 S. Pin
 by 20
 S 64 W
 34 E
 Thence
 9.20
 N 57
 (32) B
 15 the
 (33) B
 12 to
 (34) B
 1100 to
 Thence
 contains
 on S. Pin
 to S. Pin
 (42)
 Thence
 N by 4
 (43) W
 to begin
 (44)
 W 12.9
 4.5 S
 (45)
 6 to
 6 by 2
 Sec
 C
 11