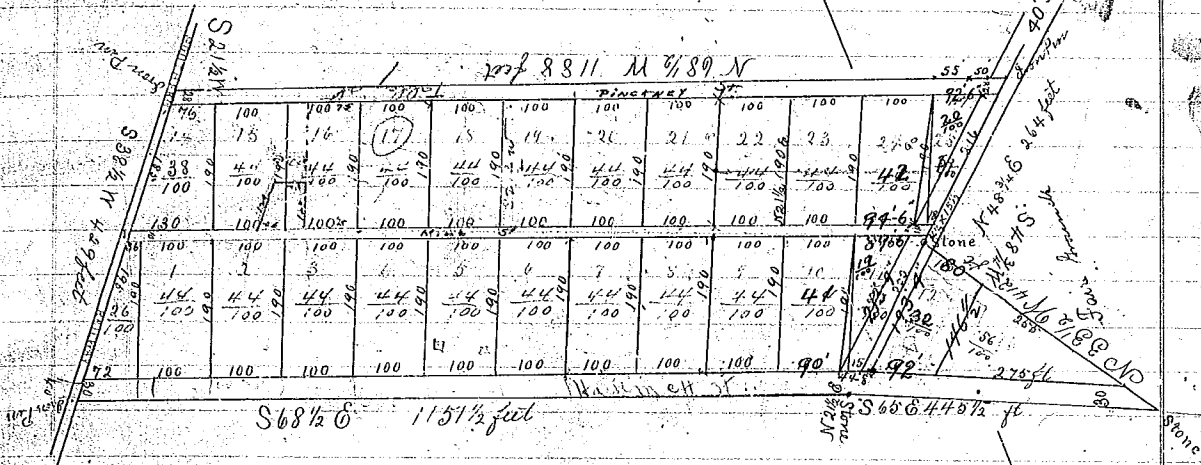


Map No. 3.

Scale 2 1/2 chains or 165 feet per inch.



State of South Carolina.
County of Greenville.

Certified for J. L. Orr, Executor and D. J. Hammitt, Executrix: Estate H. P. Hammitt, dec'd. Twelve (12) Acres Iron Pins used for the corners of each Lot.

Surveyed, May 14th, 1900. signed Wm A. Hudson

D.S.

E A L D