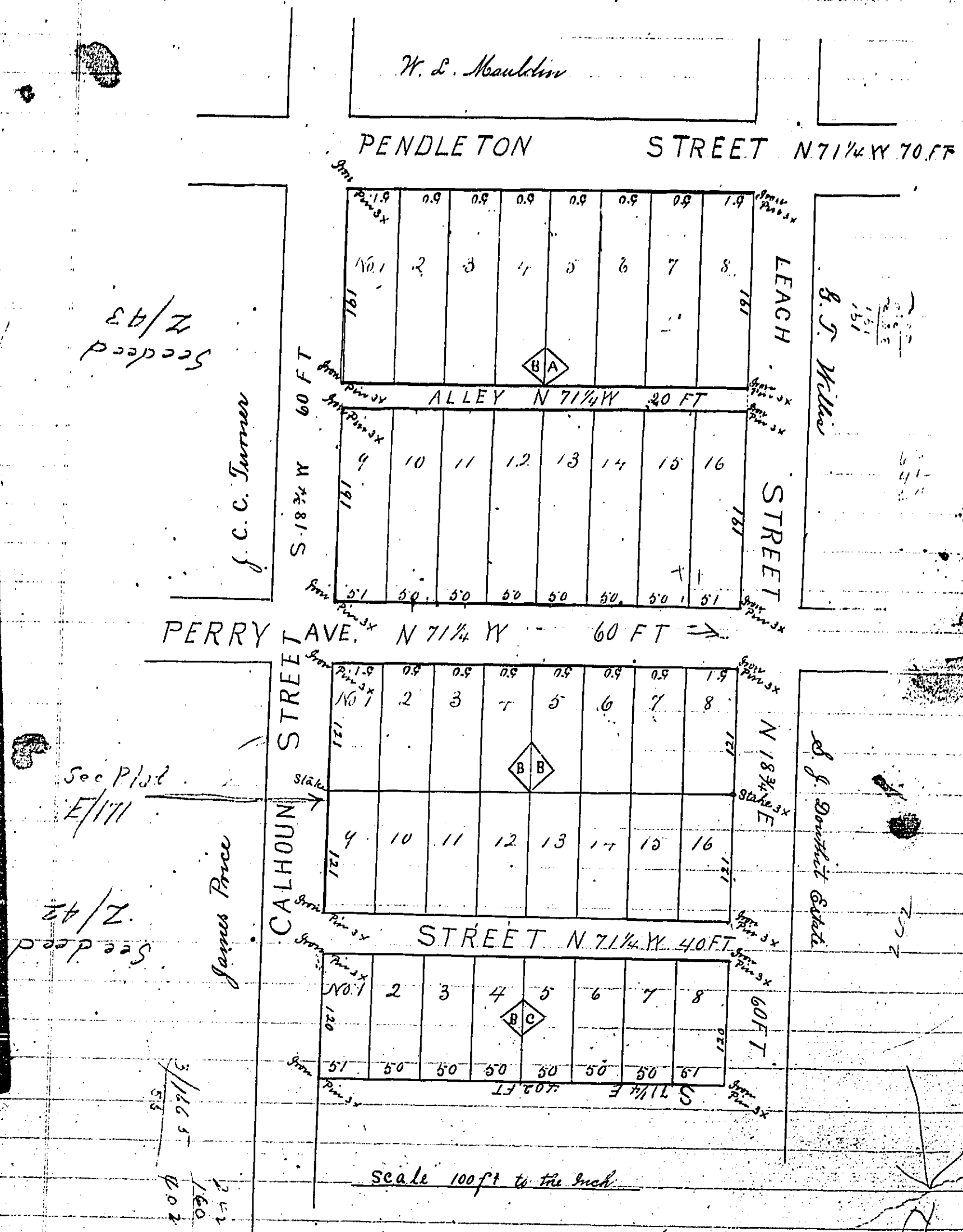


Map B. O. Mauldin Property



Sec'd 7/93

Sec P12 E/171

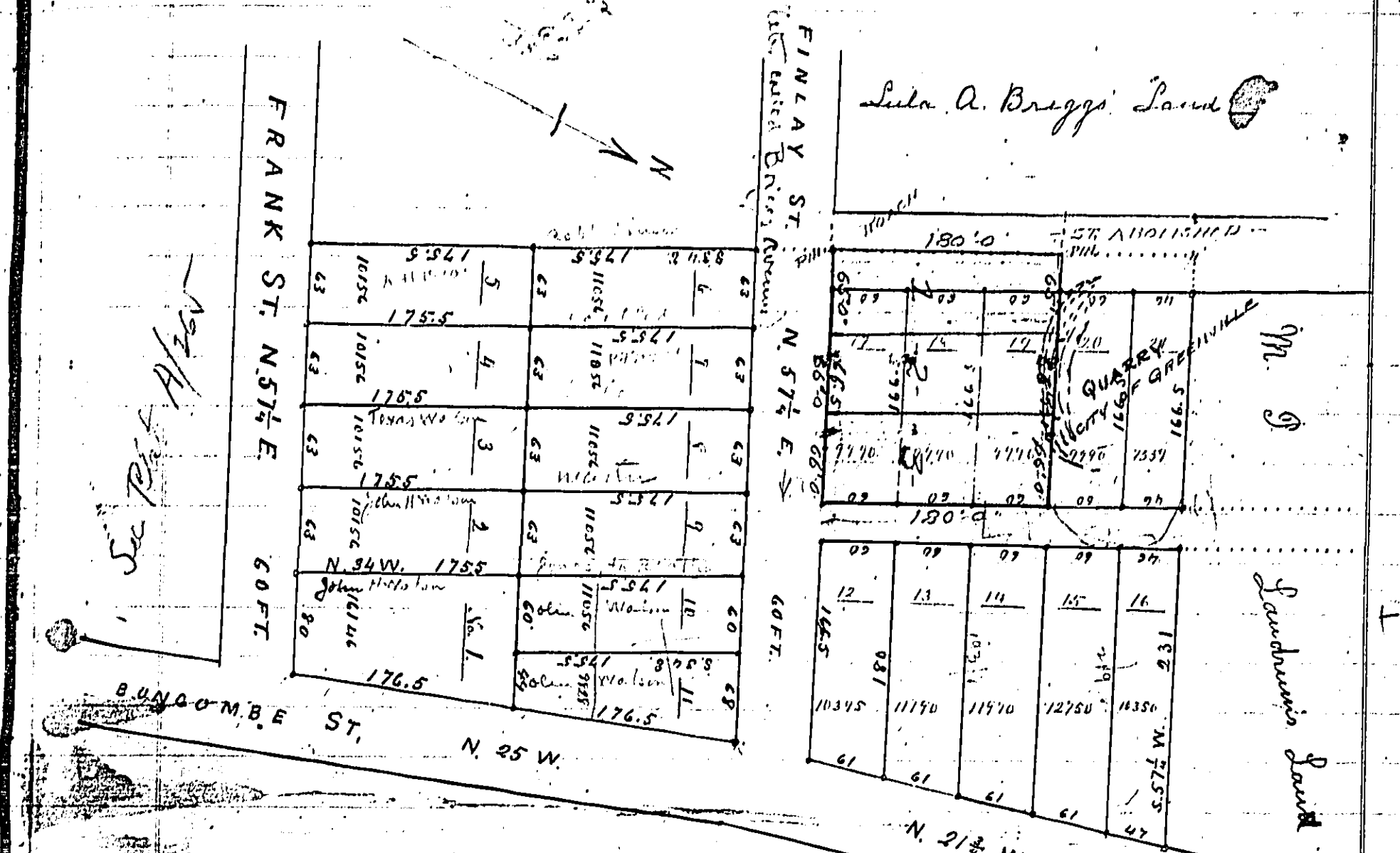
Sec'd 2/42

3/1005
160
200

The above Map represents two lots in the Western part of the City of Greenville, S. C. containing 3 3/4 acres each known as the B. O. Mauldin property on Pendleton, Leach and Calhoun Streets. By request I have divided said property into forty small lots, arranged into three blocks A, B & C.

Feb 3^d 1900 J. N. Southern S.S.

Lula A. Briggs' Land



Scale of 100ft. to the Inch

The State of South Carolina }
County of Greenville } The above Map represents a subdivision into lots and streets of two lots belonging to James A. Finlay situate in the NW part of the City of Greenville in the State aforesaid near the incorporate limits of City on the SW side of Bonaparte street and NW side of Frank Street; being the same two lots conveyed to said Finlay from Lula A. Briggs by Deed recorded in R. M. O. Office for Greenville County in Book 188 page 228. Said two lots being known and designated as Lots Nos. 13 & 14 of The W. P. McBees' deed land.

Surveyed and divided this 23^d day of May 1901.
J. N. Southern D.S.

Note: Lots 17, 18 & 19 re-cut as shown - May 1911

1/16/5