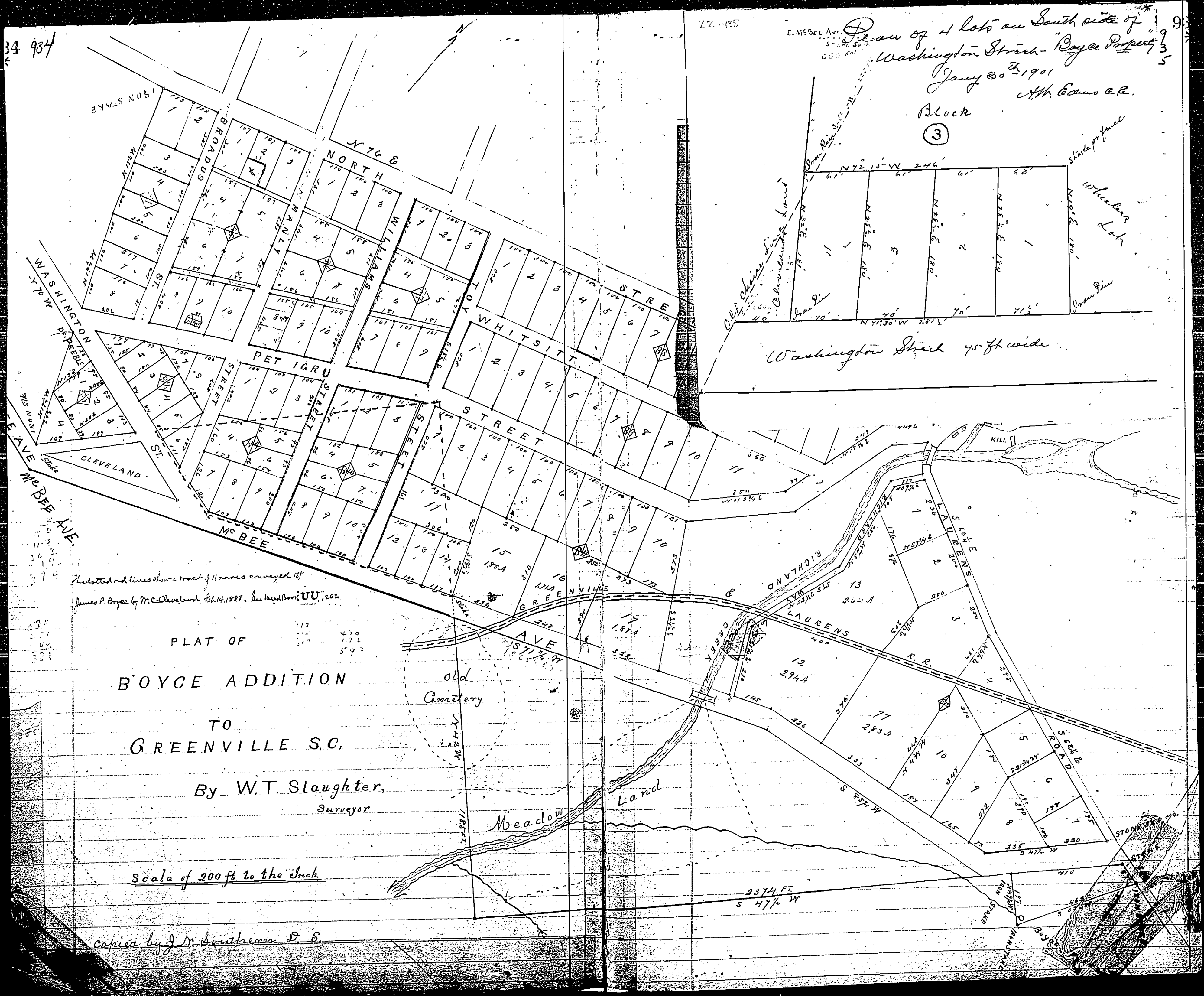


34 984

77-185

Plan of 4 lots on South side of
 Washington Street - Boyce Project
 Jan'y 30th 1901
 M.H. Adams C.E.
 Block
 (3)



The dotted red lines show a track of 11 acres conveyed to
 James P. Boyce by M. Cleveland Feb. 14, 1888. See Book 100, 262.

PLAT OF
 BOYCE ADDITION
 TO
 GREENVILLE S.C.
 By W.T. Slaughter,
 Surveyor

Scale of 200 ft to the Inch.

Copied by J. M. Southern D. S.

