

1207 PAGE 699

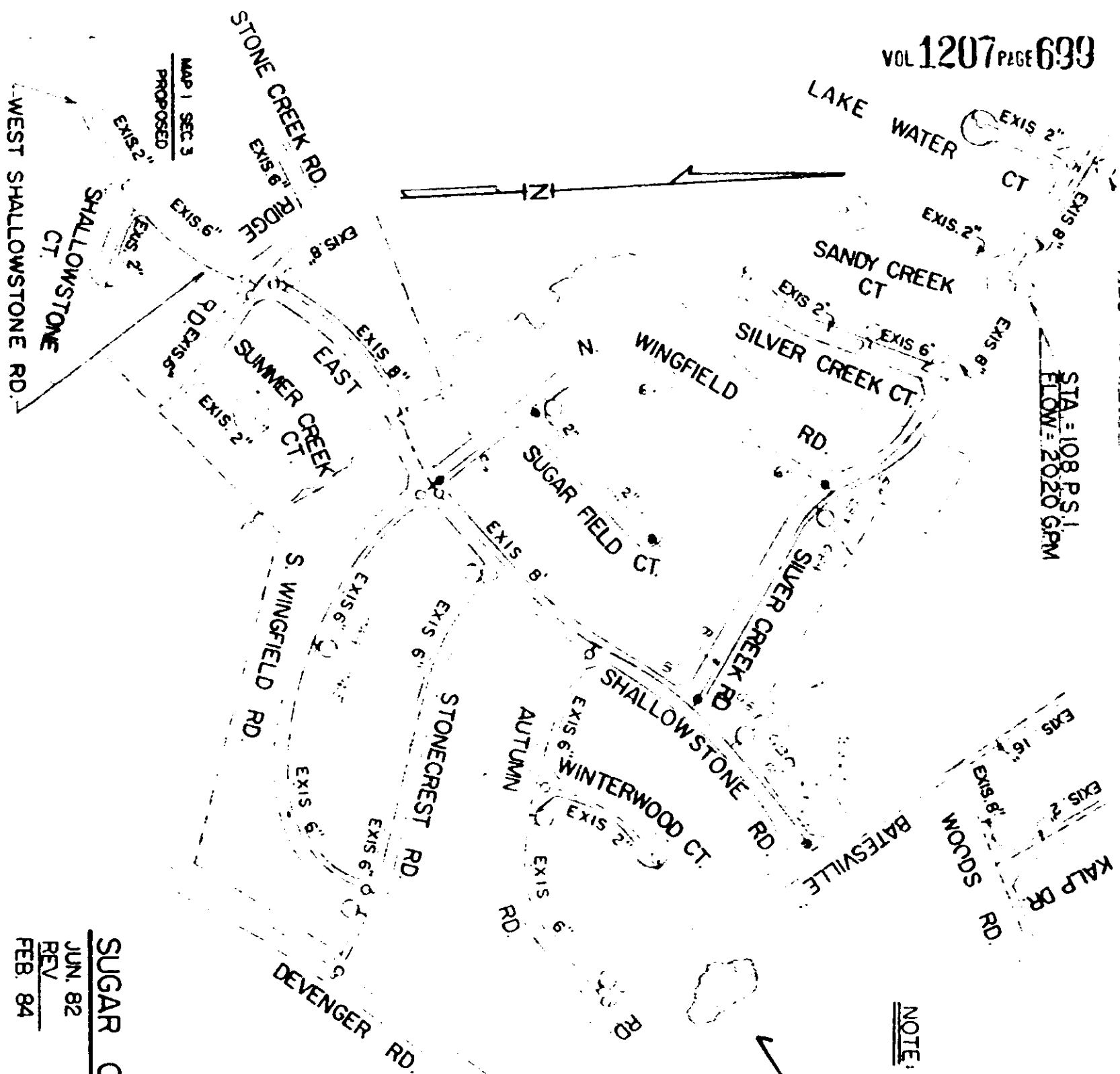
RECORDED

STA = 105 P.S.I.  
RES = 75 P.S.I.

STA = 108 P.S.I.  
FLOW = 2020 GPM

RECORDED MAR 8 1984

VOL 1207 PAGE 699



NOTE: ALL 6" 8" VALS. OPEN RIGHT  
2" VALS. OPEN LEFT  
FHYS TO BE 3-WAY  
AND OPEN RIGHT.

John C. Cothran Co., Inc.  
Ellis L. Darby, Jr.  
M. Graham Profitte, III  
FC  
Commissioners of Public Works  
of the City of Greenville, S. C.  
Pt. Bk. BOOK 534.2-1-16  
February 23, 1984

MATERIAL LIST:

8" - D. I. Pipe	1,820'
6" - D. I. Pipe	1,370'
2" - Galv. Pipe	525'
8" Valve	1
6" Valves	5
2" Valves	3
Fire Hydrants	3
Valve Boxes	9

SUGAR CREEK MAP 3, SEC. 3

JUN. 82  
REV  
FEB. 84

SCALE 1" = 400'