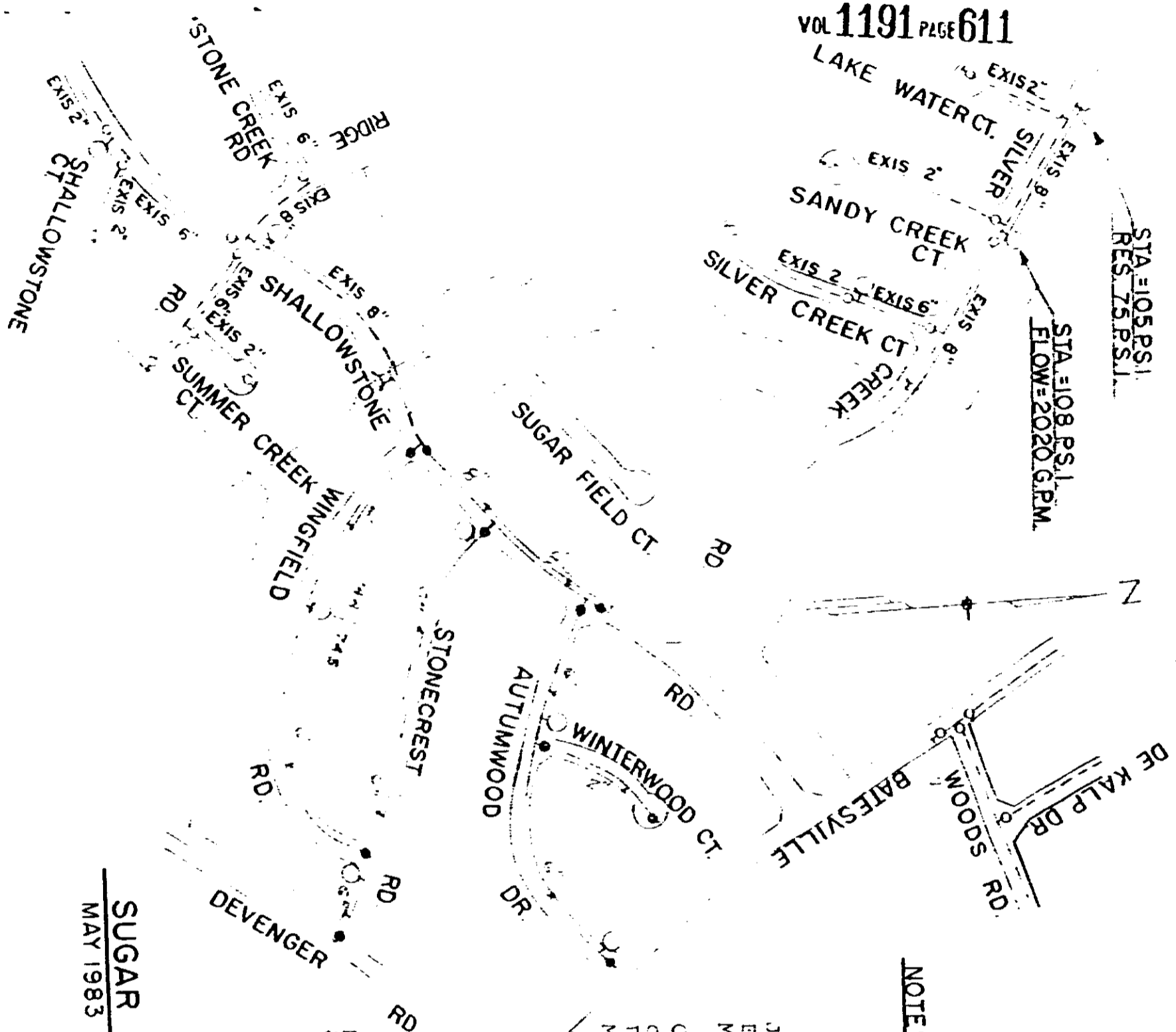


1191

VOL 1191 PAGE 611



STA=105 P.S.I.
RES. 75 P.S.I.

STA=108 P.S.I.
FLOW=2020 G.P.M.

NOTE: 6" & 8" VALS. OPEN RIGHT
2" VALS. OPEN LEFT
F HYDS. TO BE 3-WAY & OPEN RIGHT

John C. Cochran Co., Inc.
Ellis L. Darby, Jr.
M. Graham Profitte, III
to
Commissioners of Public Works
of the City of Greenville, S. C.
Pt. of Bk. BOOK 534.2-1-16
MAY 30, 1983

SUGAR CREEK MAP 2 & 3, SEC. 3
MAY 1983
SCALE 1"=400'

MATERIAL LIST:

| | |
|---------------|---------|
| Valve Boxes | 15 |
| 8" D. I. Pipe | 725'± |
| 6" D. I. Pipe | 3,885'± |
| 2" Galv. Pipe | 410'± |
| 8" VALVES | 1 |
| 6" VALVES | 9 |
| 2" VALVES | 5 |
| Pipe Hydrants | 5 |

RECORDED JUL 1 1983
at 3:08 P.M.

197

8234