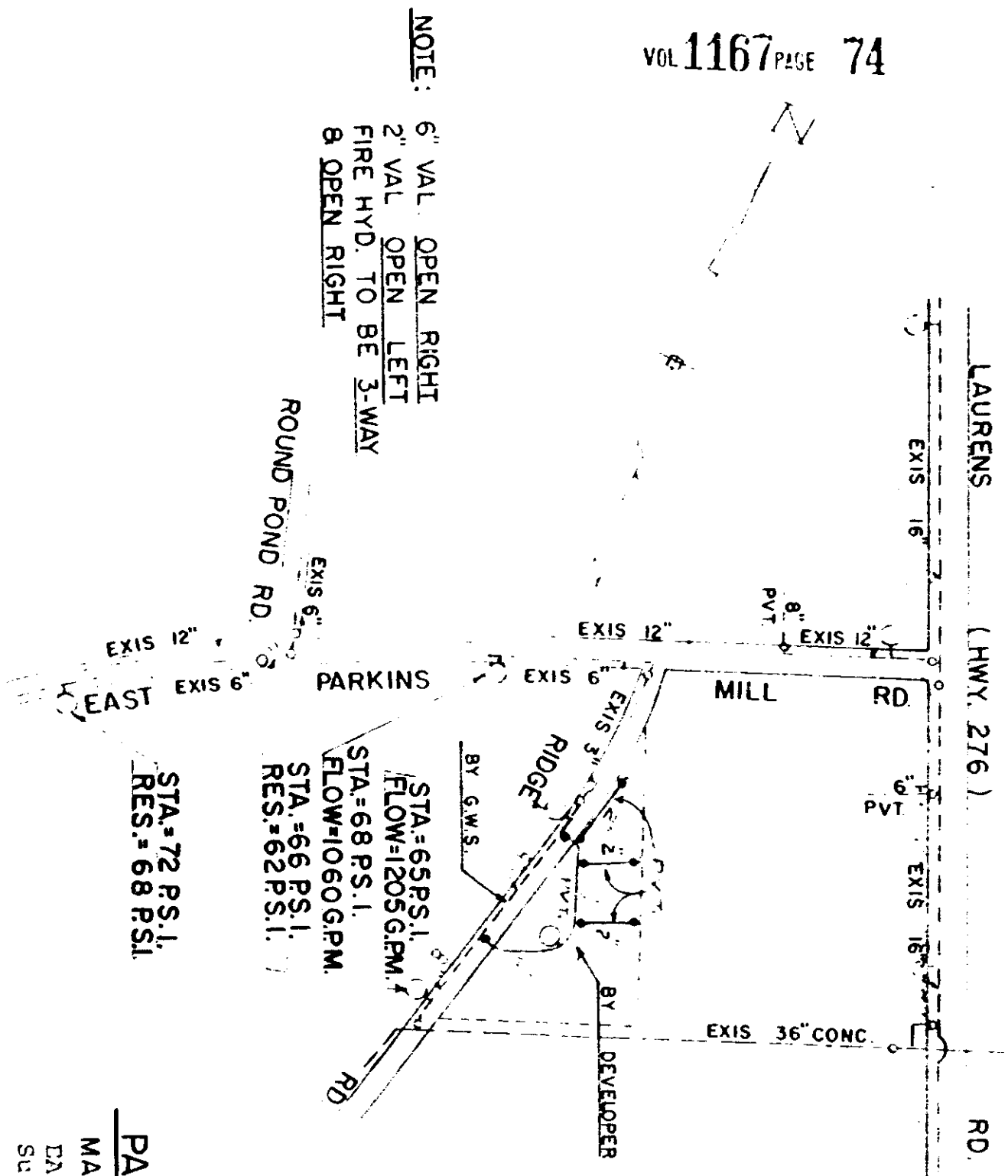


200

2728 RV-2



NOTE: 6" VAL OPEN RIGHT  
 2" VAL OPEN LEFT  
 FIRE HYD. TO BE 3-WAY  
 & OPEN RIGHT

STA.=72 P.S.I.  
 RES.=68 P.S.I.

STA.=65 P.S.I.  
 FLOW=1205 G.P.M.  
 STA.=68 P.S.I.  
 FLOW=1060 G.P.M.  
 STA.=66 P.S.I.  
 RES.=62 P.S.I.

**PARKINS RIDGE APTS.**  
 MAR., 1982 SCALE 1"=400'  
 EASEMENT  
 Sunbelt Properties, Inc.  
 to  
 Commissioners of Public Works  
 of the City of Greenville, S. C.  
 April 29, 1982  
 Block Book 272-1-17.3

RECORDED MAY 18 1982 at 4:21 P.M.

25684