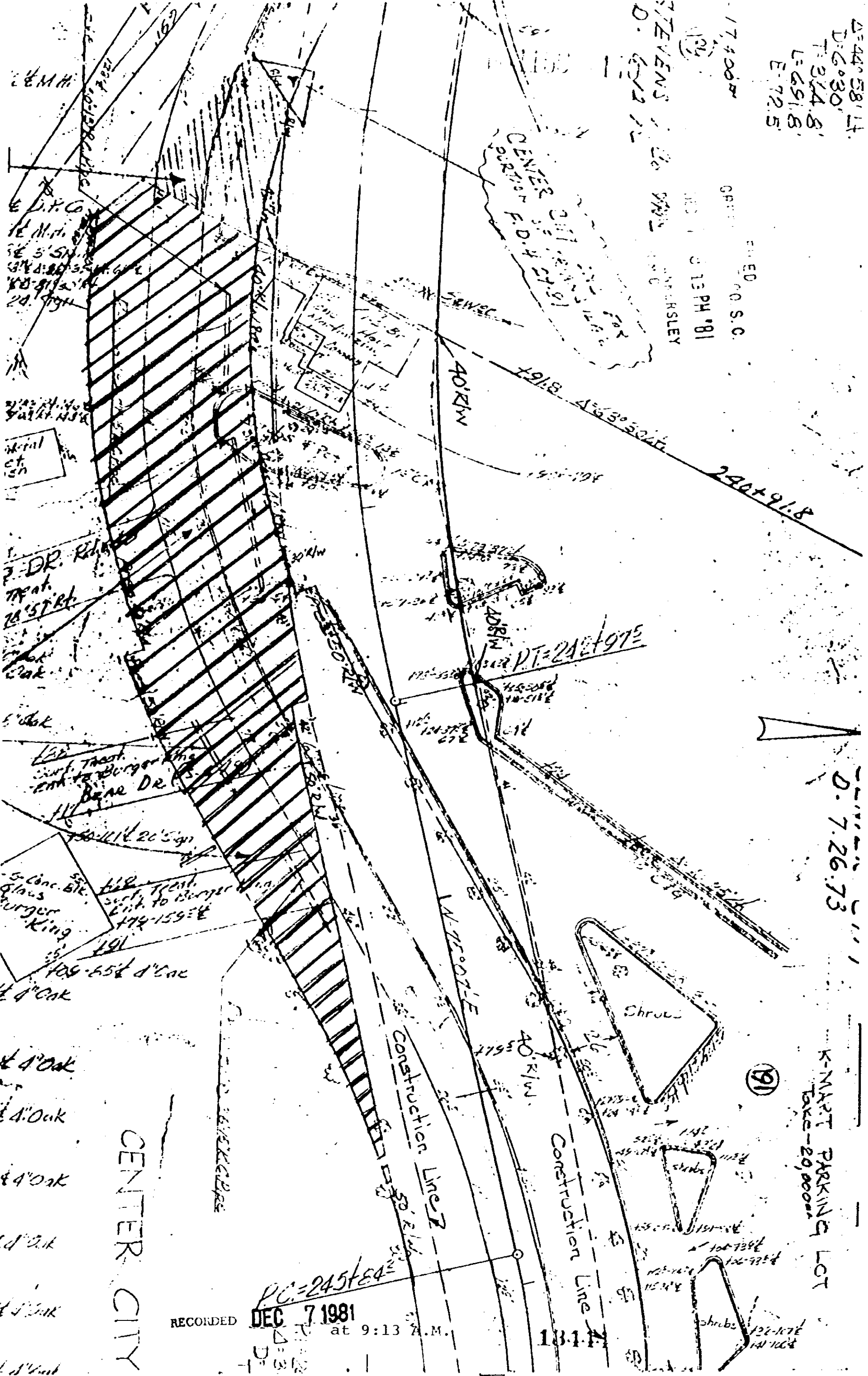


6210

D=44°58'14"
D=60°30'
L=324.8'
E=72.5'

FILED
NO. S.C.
DEC 13 1981
D. STEVENS



E.M.H.
E.D.P.C.
E.M.H.
E 3'51'
314.8
38.91
20.79

sketch
of
plan

DR. R...
16'51'
Oak

Oak
11'

5' Conc. Bit.
Glass
Burger
King
191'
109-65' d'Oak

4' Oak
4' Oak
4' Oak
4' Oak
4' Oak
4' Oak

CENTER CITY

RECORDED DEC 7 1981 at 9:13 A.M.

P.C.=245184

181

4325 RV-2