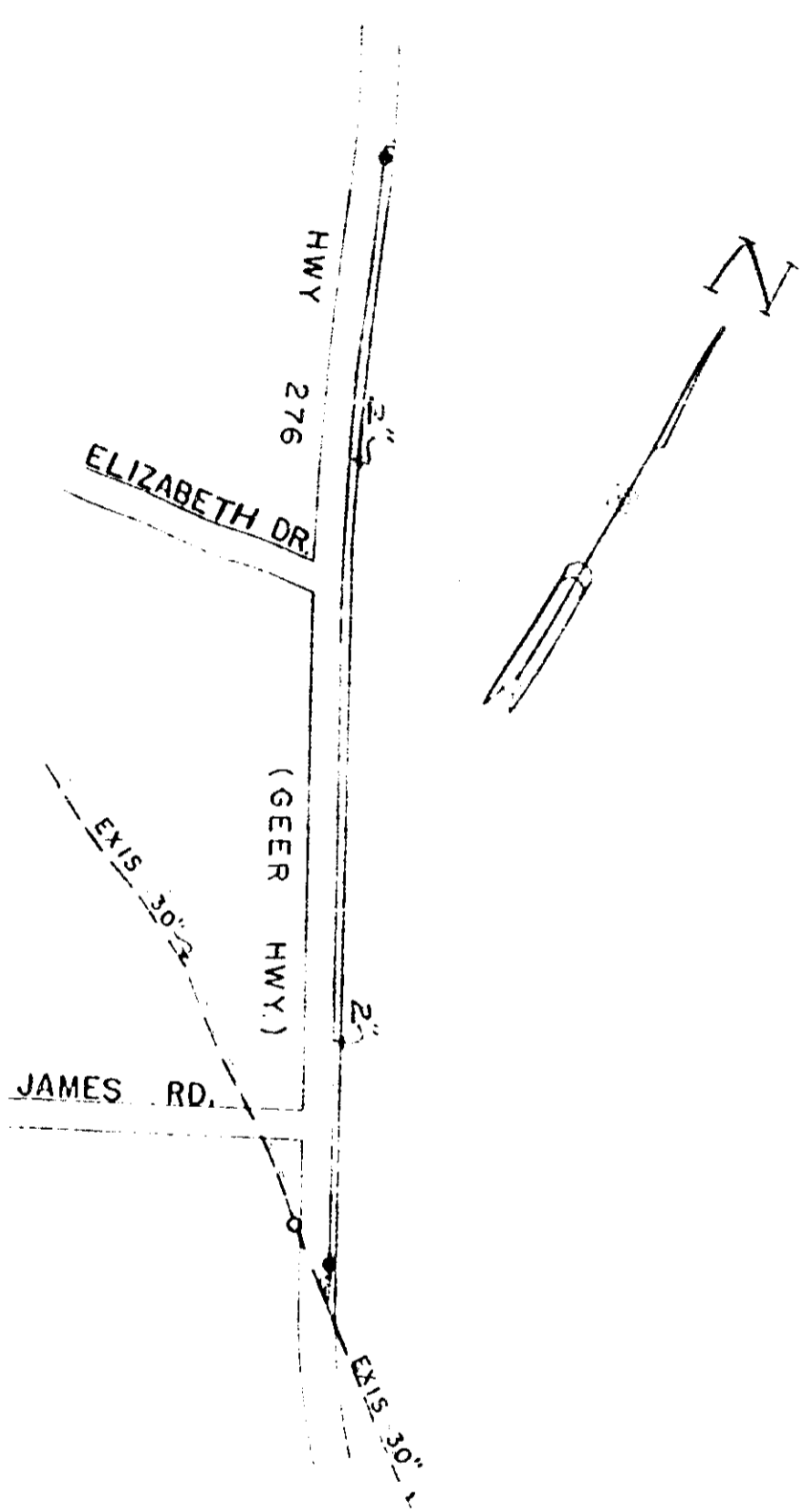


5720



- Material List:
- 2" Galv. Pipe - 2,400'±
  - 2" Valves - 2

HWY. 276 (GEER HWY.)

SEP 1981 SCALE 1" = 400'

Flora B. Styles, Executrix  
 Estate of Homer Styles  
 to  
 Commissioners of Public Works  
 of the City of Greenville, S. C.  
 September 21, 1981  
 Block Book 505.5

9410

RECORDED OCT 14 1981 at 3:35 P.M.

4328 RV-2