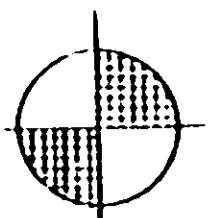
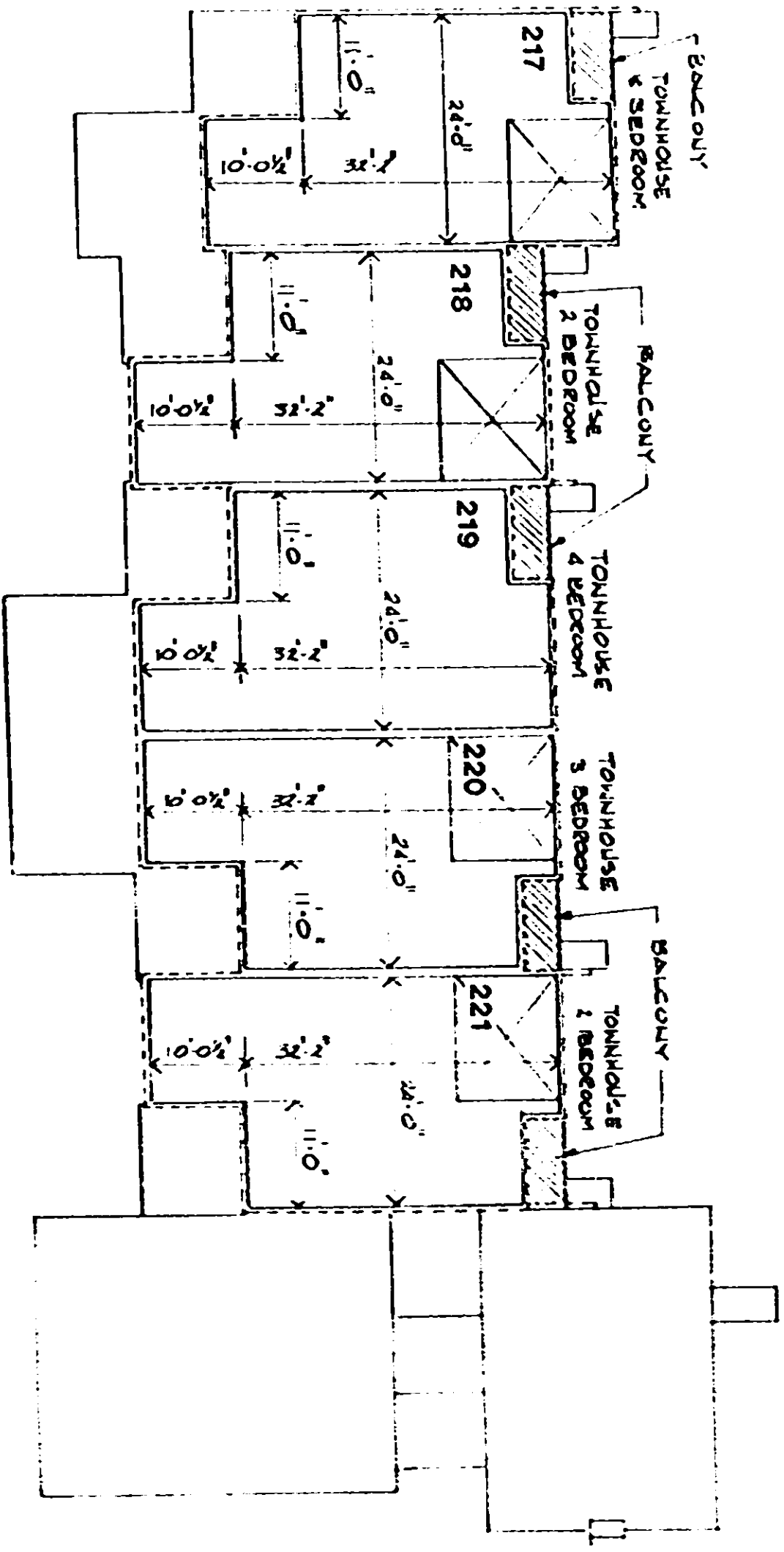




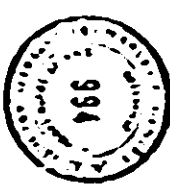
B 5 2 0



NO. 217 - 222 FL. PLAN (2nd)

 LIMITED COMMON ELEMENTS
 GENERAL COMMON ELEMENTS

In Conformance with Chapter 33, Article 10, Section 10-101 of the South Carolina Code of Laws, 1977, as amended, this plan was prepared and certified by the State Planning Board on 1-27-81.



INGLESIDE HORIZONTAL PROPERTY REGIME

CHARLES F. GENTRY A.I.A. ARCHITECT

GREENVILLE

SOUTH CAROLINA

1-27-81

1328 RV-2