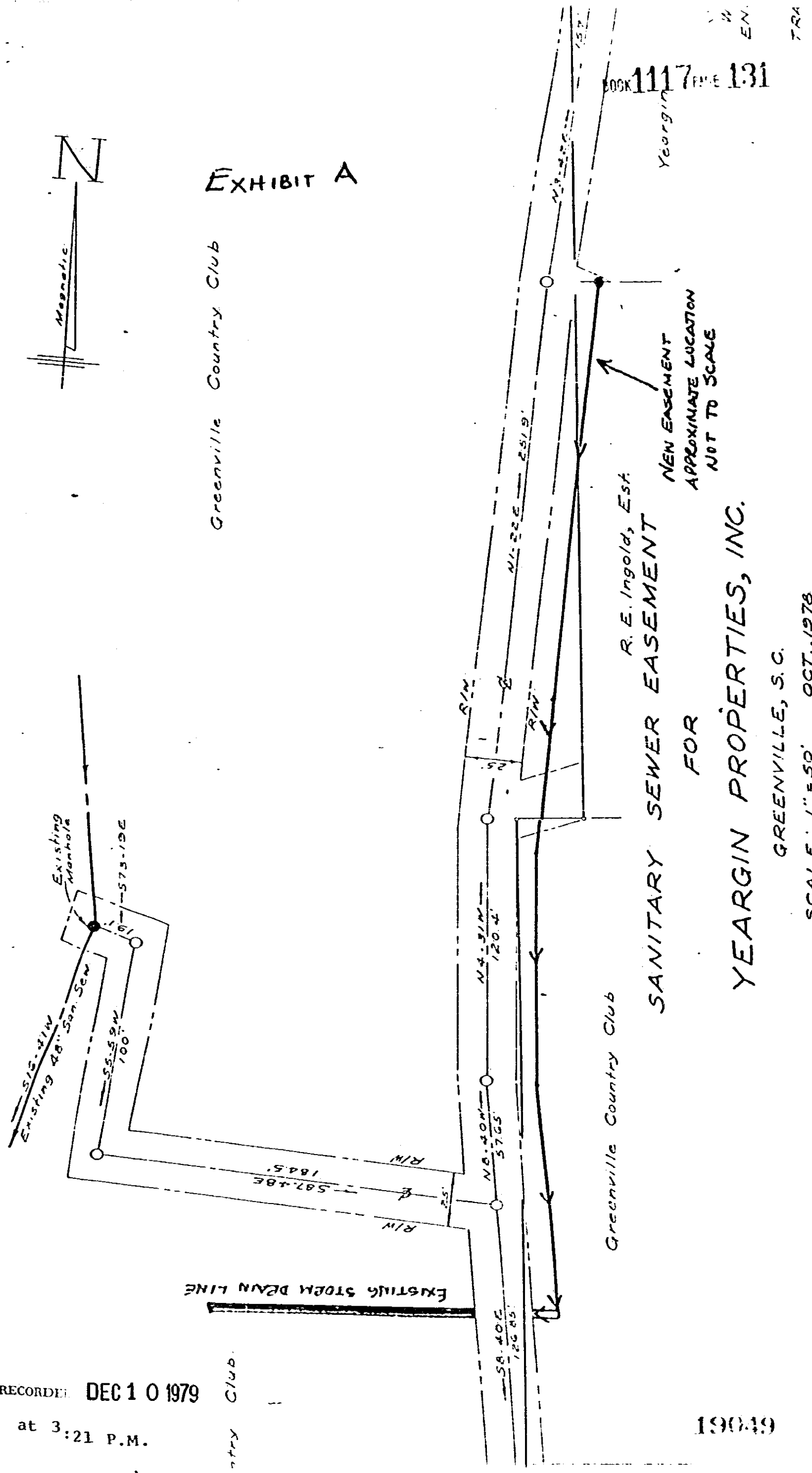


EXHIBIT A

Greenville Country Club



LOCK 1117 FINE 131

Yeargin

R. E. Ingold, Est.

SANITARY SEWER EASEMENT

FOR

YEARGIN PROPERTIES, INC.

GREENVILLE, S.C.

SCALE: 1" = 50' OCT., 1978

NEW EASEMENT
APPROXIMATE LOCATION
NOT TO SCALE

Greenville Country Club

EXISTING STORM DRAIN LINE

RECORDED DEC 10 1979

at 3:21 P.M.

Country Club

19049

4328 RV-2

0131