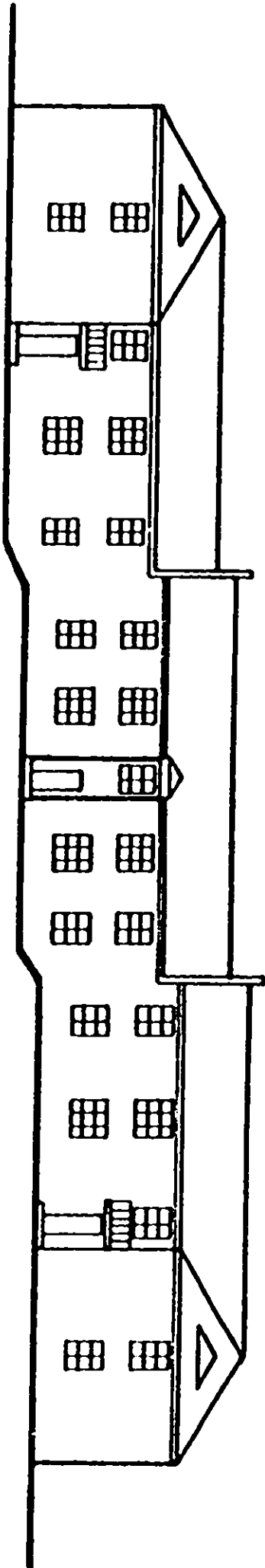


VOL 1098 PAGE 850



TYPICAL VERTICAL SECTION

LEWIS VILLAGE HORIZONTAL PROPERTY REGIME
GREENVILLE CO., S.C.

Scale 1" = 20' February, 1979

DALTON & NEVES CO., ENGINEERS

121 MANLY STREET

GREENVILLE, S. C.

R. W. Dalton
S.C. Reg. No. 916

BLDG. 1 (PLAZA)

6580

4328 RV-2