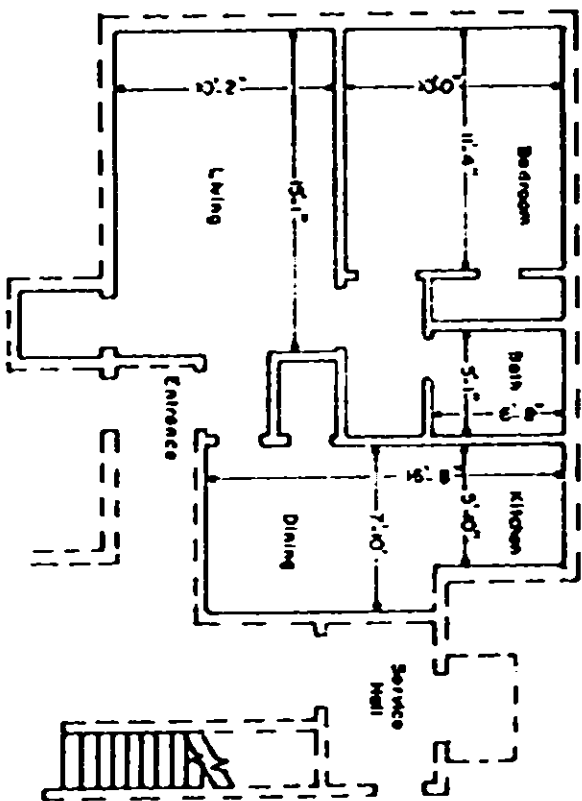


VOL 1098 PAGE 843

Boundary of unit ———
 Common Elements - - - -
 Stairs - Limited Common Elements [] [] [] [] [] []



TYPICAL UNIT SCHEMATIC OF
 FLOOR PLAN FOR 1 BEDROOM
 LEWIS VILLAGE HORIZONTAL PROPERTY REGIME
 GREENVILLE COUNTY
 GREENVILLE, SOUTH CAROLINA

Scale 1" = 10' February, 1979
 DALTON & NEVES CO., ENGINEERS
 GREENVILLE, S. C.

This is to certify that this is a
 Typical Section of the following
 units of Lewis Village Horizontal
 Property Regime:
 (PLAZA)
 2B, 2E, 2N, 2O
 3B, 3E, 3N, 3O

R. W. Dalton
 S. C. Reg. No. 516

780

4328 RV.2