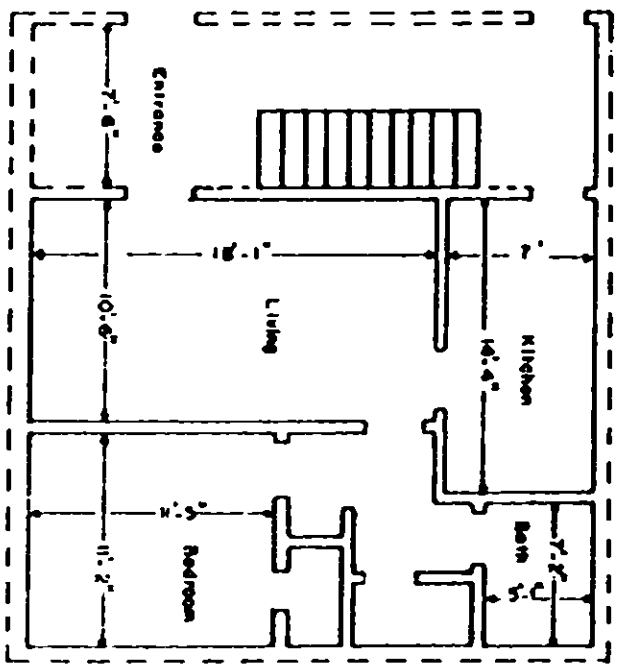


VOL 1098 PAGE 841

Boundary of unit ———
 Common Elements - - - -
 Stairs - Limited Common Elements [Hatched Box]



TYPICAL UNIT SCHEMATIC OF
 FLOOR PLAN FOR 1 BEDROOM
 LEWIS VILLAGE HORIZONTAL PROPERTY REGIME

GREENVILLE COUNTY
 GREENVILLE, SOUTH CAROLINA
 Scale 1" = 10' February, 1979
 DALTON & NEVES CO., ENGINEERS
 GREENVILLE, S. C.

This is to certify that this is a
 Typical Section of the following
 units of Lewis Village Horizontal
 Property Regime.
 (PLAZA)
 1C, 1E, 1G, 1H, 1J, 1K, 1L, 1O
 2C, 2E, 2G, 2H, 2J, 2K, 2L, 2O
 3C, 3E, 3G, 3H, 3J, 3K, 3L, 3O
R. W. Weaver
 S. C. Reg. No. 916

780

2-AV 6237