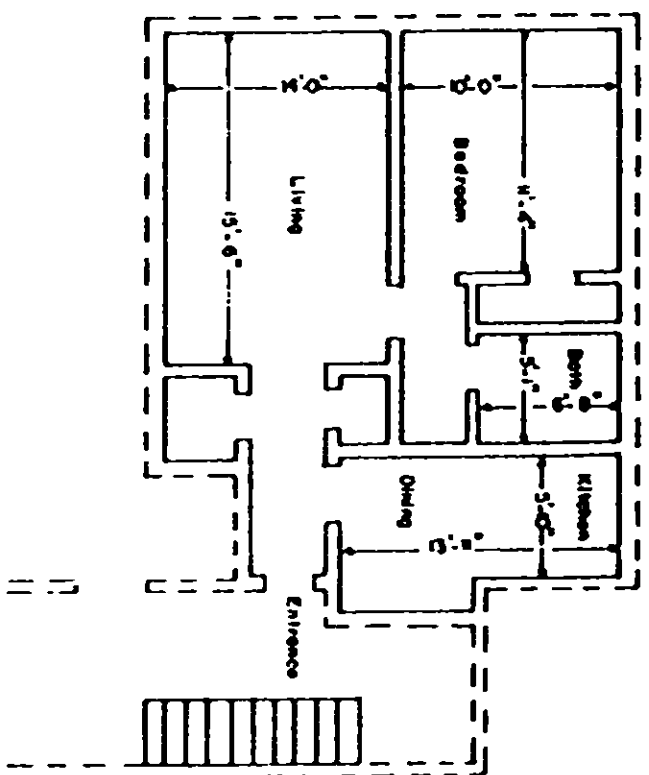


VOL 1098 PAGE 840

Boundary of unit ———  
 Common Elements - - - -  
 Stairs - Limited Common Elements [|||||]



TYPICAL UNIT SCHEMATIC OF  
 FLOOR PLAN FOR 1 BEDROOM

LEWIS VILLAGE HORIZONTAL PROPERTY REGIME

GREENVILLE COUNTY  
 GREENVILLE, SOUTH CAROLINA

Scale 1" = 10' February, 1979  
 DALTON & NEVES CO., ENGINEERS  
 GREENVILLE, S. C.

This is to certify that this is a  
 Typical Section of the following  
 units of Lewis Village Horizontal  
 Property Regime.  
 (PLAZA)  
 1B, 1E, 1N, 1O

*R. W. Jackson*  
 S.C. Reg. No. 916