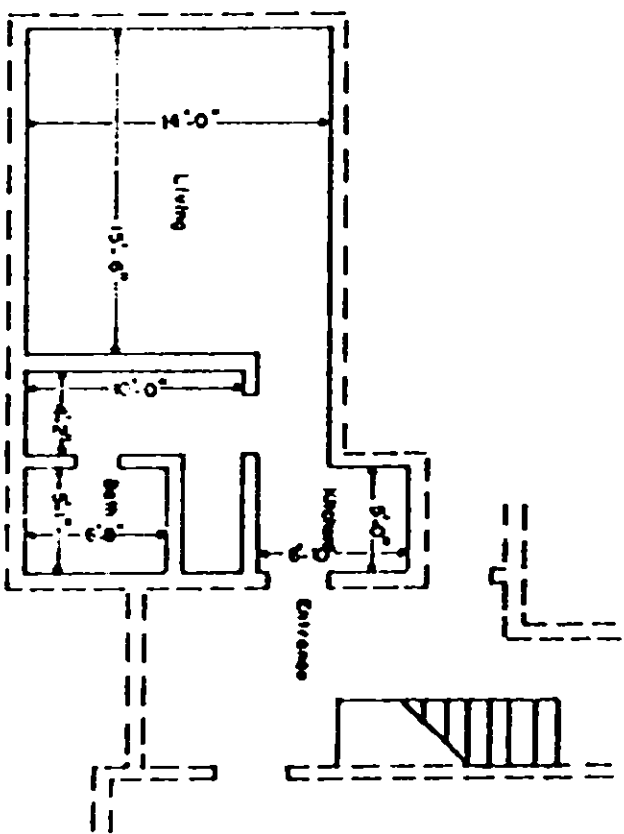


VOL 1098 PAGE 839

Boundary of unit ———  
 Common Elements - - - -  
 Stairs - Limited Common Elements [Hatched Box]



TYPICAL UNIT SCHEMATIC OF  
 FLOOR PLAN FOR EFFICIENCY

LEWIS VILLAGE HORIZONTAL PROPERTY REGIME  
 GREENVILLE COUNTY  
 GREENVILLE SOUTH CAROLINA

Scale 1" = 10' February, 1979  
 DALTON & NEVES CO., ENGINEERS  
 GREENVILLE, S. C.

This is to certify that this is a  
 Typical Section of the following  
 units of Lewis Village Horizontal  
 Property Regime.  
 (PLAZA)  
 I.A. I.D. I.M. I.P

*R. W. Hadden*  
 S. C. Reg. No. 916