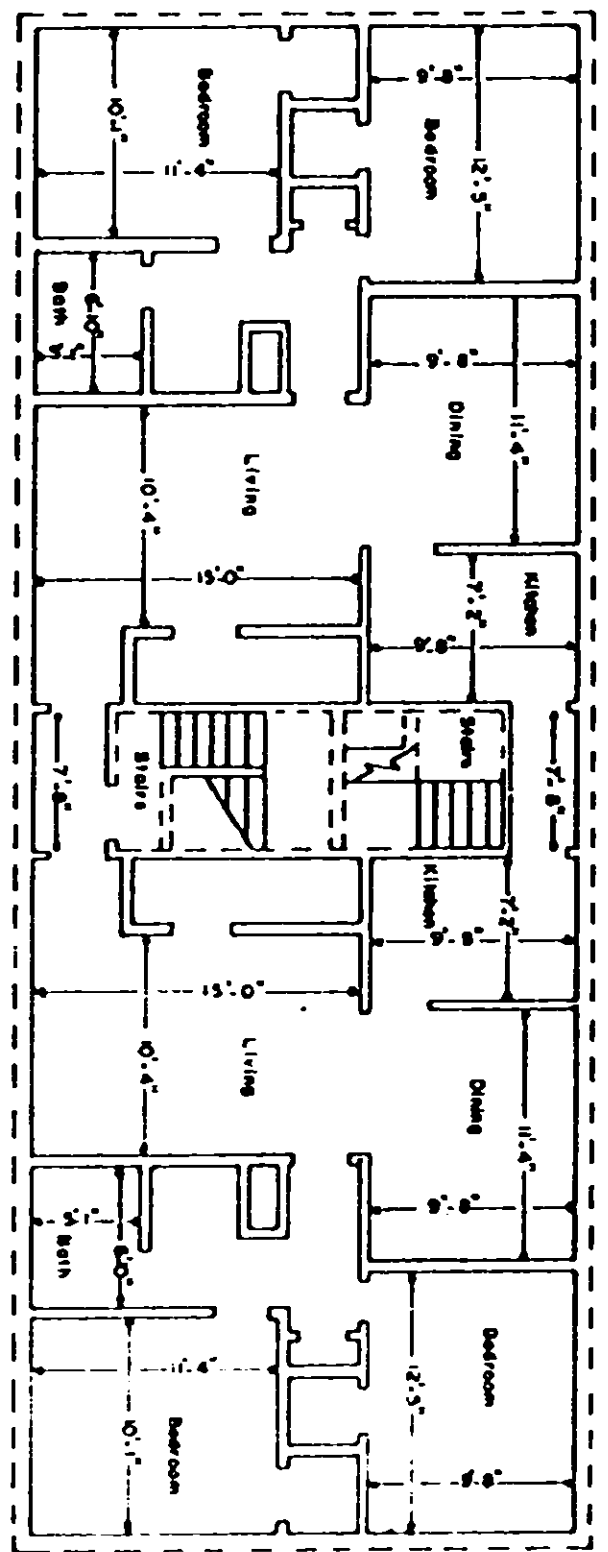


VOL 1038 PAGE 838

Boundary of unit ———
 Common Elements - - - -
 Stairs - Limited Common Elements [] [] [] [] [] []



This is to certify that this is a
 Typical Section of the following
 units of Lewis Village Horizontal
 Property Regime.

ISC
R W Lewis
 S. C. Reg. No. 916

TYPICAL UNIT SCHEMATIC OF
 FLOOR PLAN FOR 4 BEDROOMS

LEWIS VILLAGE HORIZONTAL PROPERTY REGIME
 GREENVILLE COUNTY
 GREENVILLE, SOUTH CAROLINA

Scale 1" = 10' February, 1979
 DALTON & NEVES CO., ENGINEERS
 GREENVILLE, S. C.