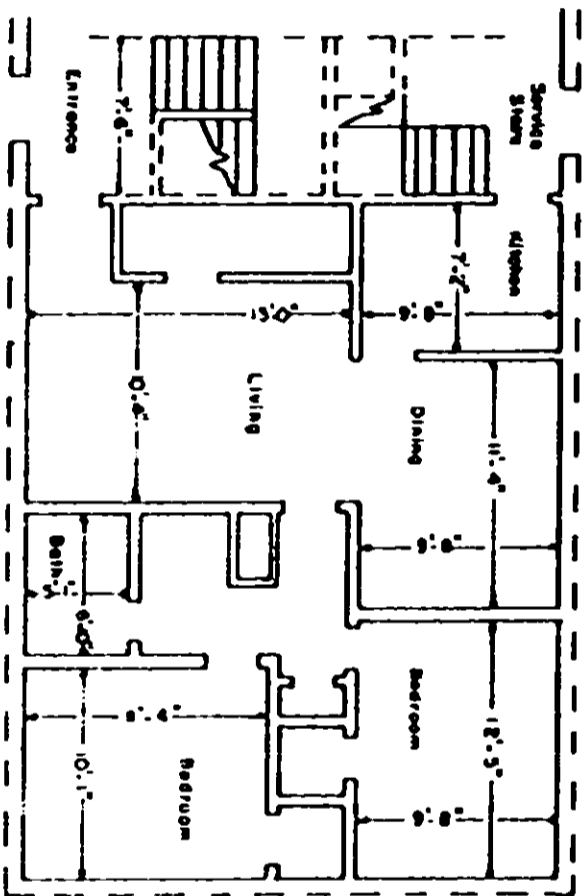


VOL 1098 PAGE 835

Boundary of unit ———  
 Common Elements - - - -  
 Stairs - Limited Common Elements [ ] [ ] [ ] [ ] [ ]



TYPICAL UNIT SCHEMATIC OF  
 FLOOR PLAN FOR 2 BEDROOMS

LEWIS VILLAGE HORIZONTAL PROPERTY REGIME  
 GREENVILLE COUNTY  
 GREENVILLE, SOUTH CAROLINA

Scale 1" = 10'  
 February, 1979  
 DALTON & NEVES CO., ENGINEERS  
 GREENVILLE, S. C.

This is to certify that this is a  
 Typical Section of the following  
 units of Lewis Village Horizontal  
 Property Regime.  
 3A, 3B, 3C, 3D, 7A, 7B, 7C, 7D  
 13A, 13B, 13C, 13D, 14A, 14B, 14C, 14D  
 15A, 15B, 19A, 19B, 19C, 19D

*R.W. Wallace*  
 S. C. Reg. No. 916