

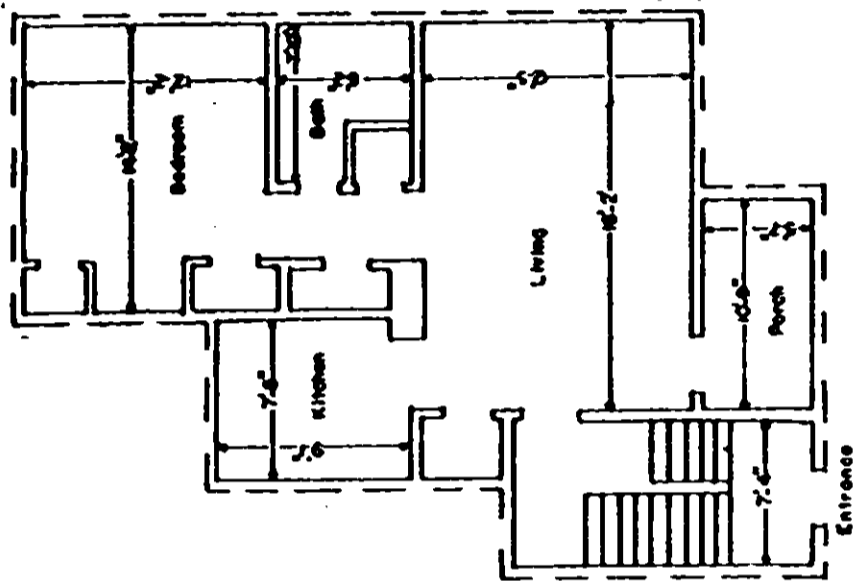
This is to certify that this is a Typical Section of the following units of McDaniel Heights Horizontal Property Regime.

7B, 7D, 8A, 8C, 8E, 9B, 9D, 9F, 10A, 10C

Total Units = 10

R.W. Dalton
S.C. Reg. No. 916

EXHIBIT "B"
Number 9 of 12



1000 081

TYPICAL UNIT SCHEMATIC OF
FLOOR PLAN FOR 1 BEDROOM WITHOUT DINING

MCDANIEL HEIGHTS HORIZONTAL PROPERTY REGIME

GREENVILLE CO., S.C.

Scale 1" = 10" Jan., 1979

DALTON & NEVES CO., ENGINEERS

Boundary of unit
Common Elements
Stairs - Limited Common Elements