

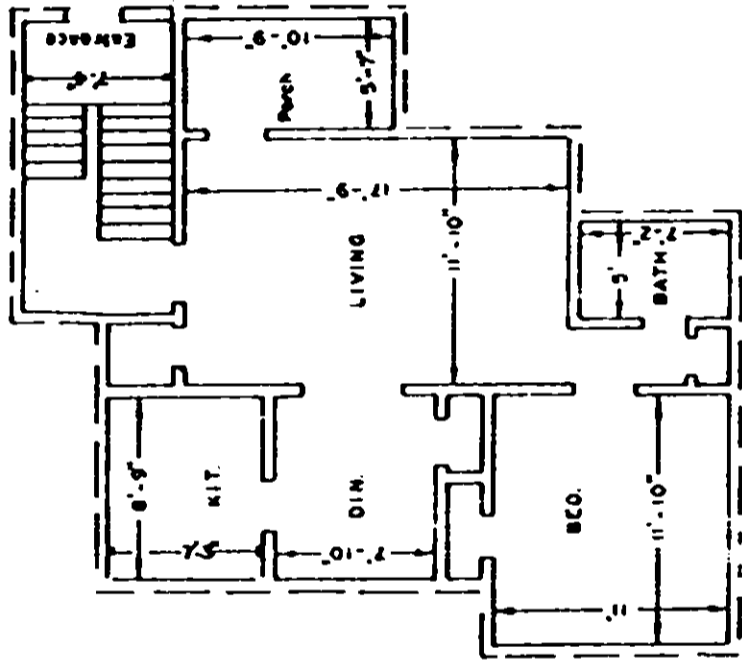
This is to certify that this is a Typical Section of the following units of McDaniel Heights Horizontal Property Regime.

1A, 1C, 2B, 2D, 2F, 2E, 4A, 4C, 5B, 5D, 5F, 5E, 5C, 5A, 6B, 6D, 7C, 8D, 8F, 9A, 9C, 9E, 10B, 10D, 12F, 12A, 12C, 12E, 13B, 13D.

Total Units = 30

H. W. Dalton
S.C. Reg. No. 916

EXHIBIT "B"
Number 7 of 12



TYPICAL UNIT SCHEMATIC OF
FLOOR PLAN FOR 1 BEDROOM WITH DINING

MCDANIEL HEIGHTS HORIZONTAL PROPERTY REGIME

GREENVILLE CO., S. C.

Scale 1" = 10' Jan., 1979

DALTON & NEVES CO., ENGINEERS

1952-373