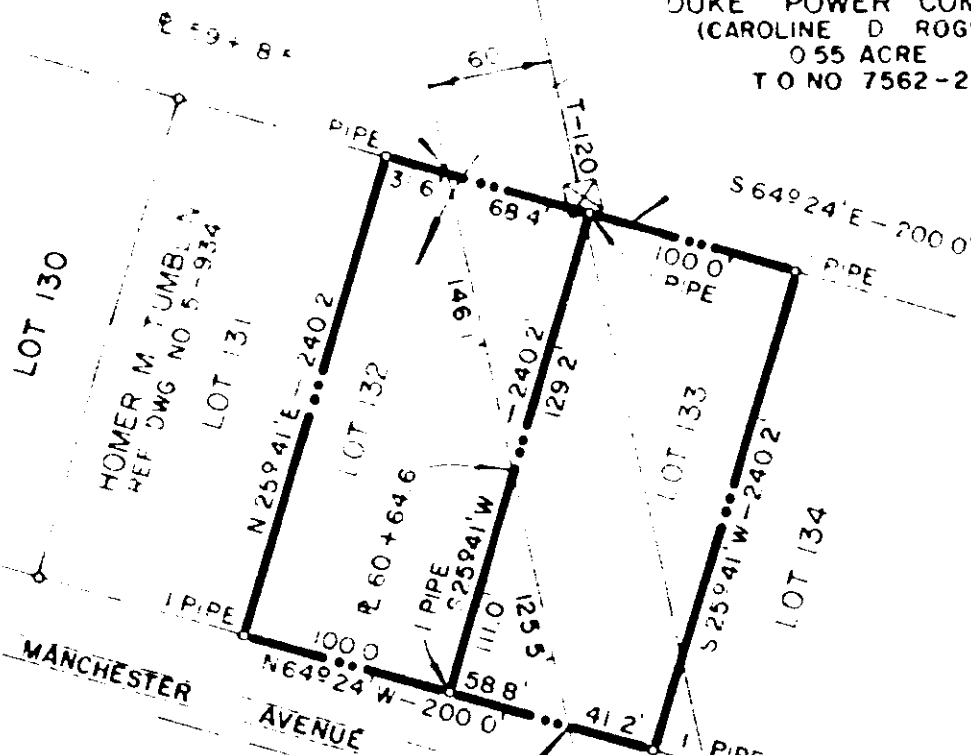




MARY JANE McCARTER
REF DWG NO 159-112

DUKE POWER COMPANY
(CAROLINE D ROGERS)
0.55 ACRE
T O NO 7562-2



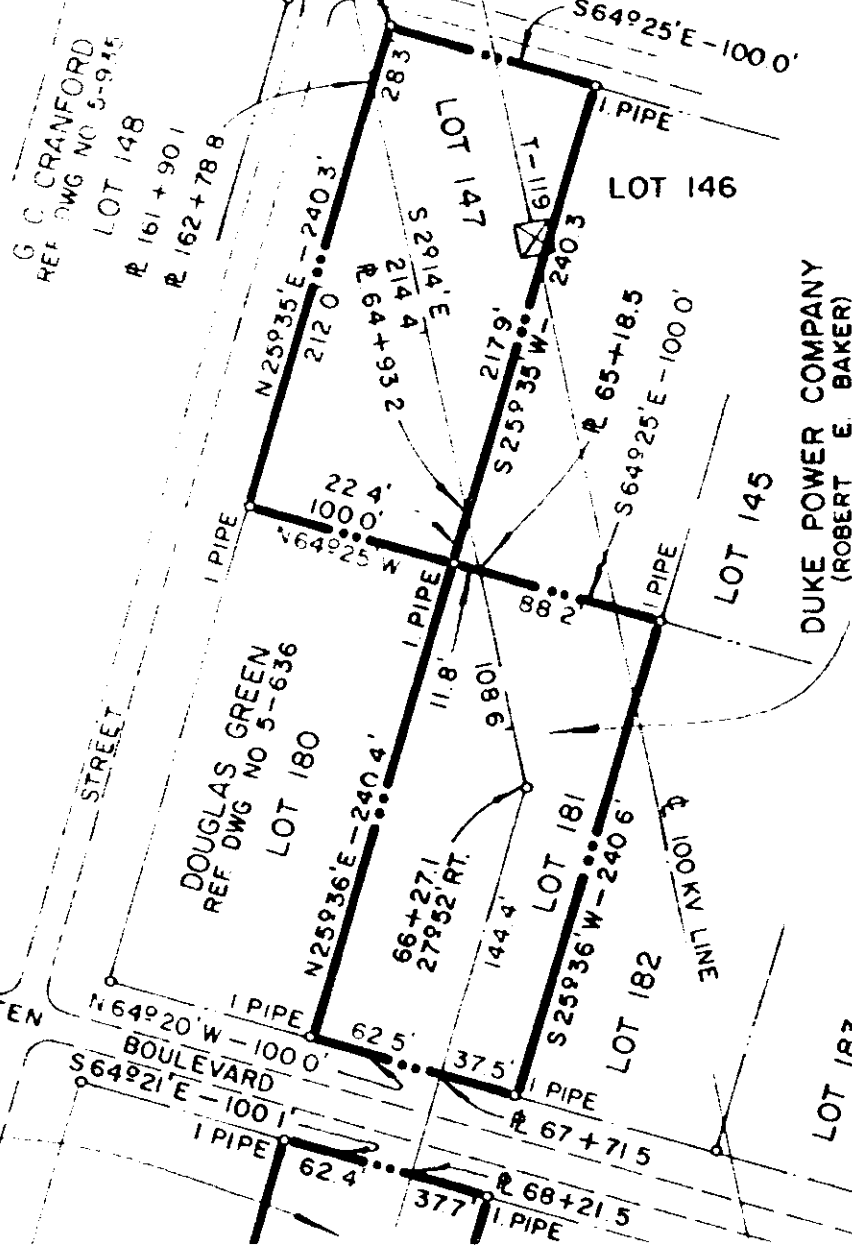
CAROLINA COURT
SECTION 2

"I Hereby" Certify that the Ratio Of
Precision of the field survey is
1:10,000 as shown and the Area was
determined by D.M.D. method of Area
Calculation.

Albert M. Sperry
S.C., R.L.S. No. *2778*
Duke Power Co.
Charlotte, NC



DUKE POWER COMPANY
(STEVE JACKS)
0.55 ACRE
T O NO 7562-7



DUKE POWER COMPANY
(ROBERT E. BAKER)
0.55 ACRE
T O NO. 7562-6