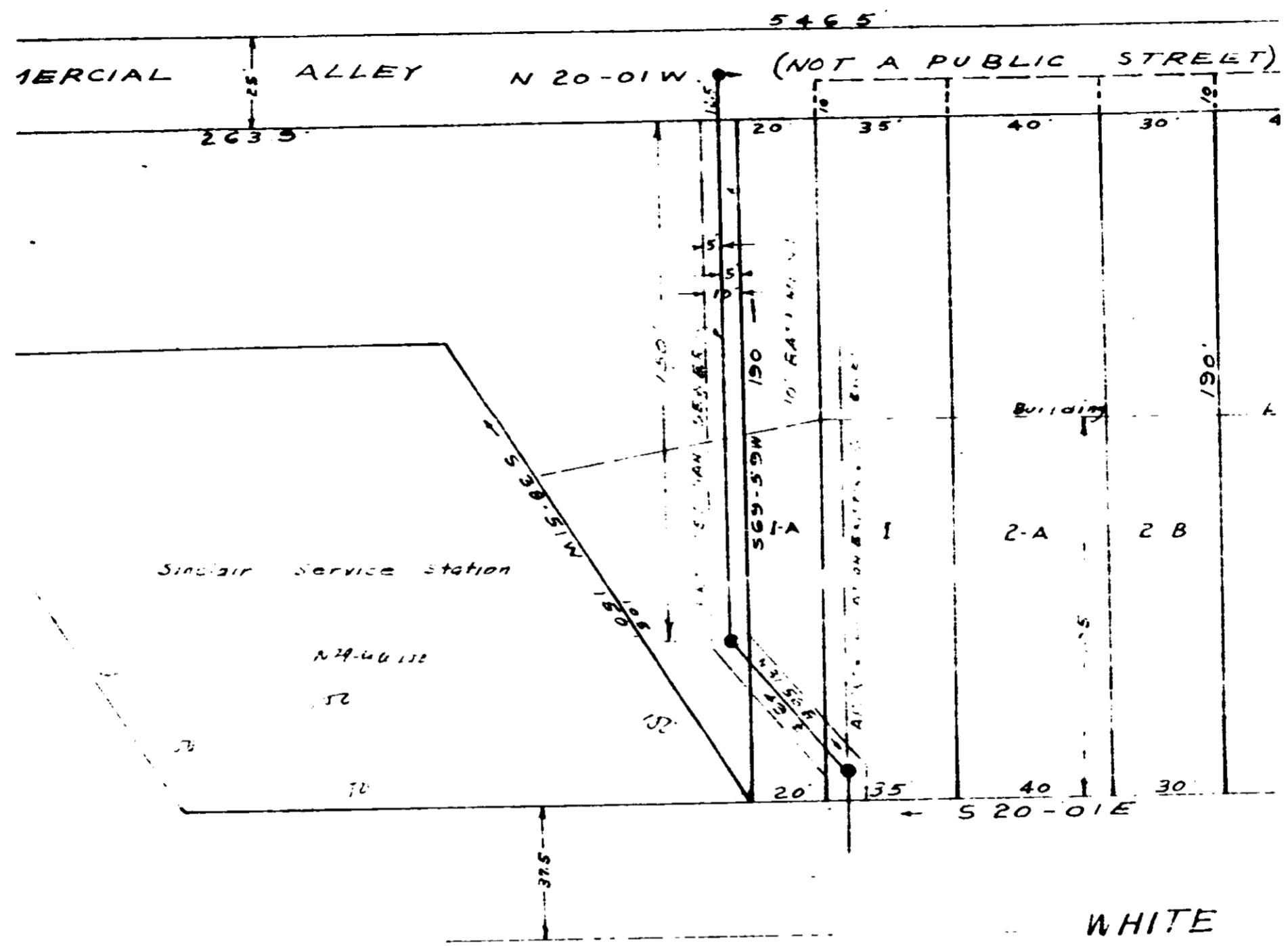


McHUGH



Plat revised 2/12/61  
 Lot 3C surveyed 12/2/61  
 Lots 3-D, 3-E, 3-F surveyed 5/11/61  
 Revised 1/4/67  
 REVISED TO SHOW EASEMENT 11/9/77

PROPERTY OF  
 P L & PAULINE B. McHUGH

NEAR GREENVILLE S.C.

SCALE 1"=40'

OCT. 6, 1959

C.D. Riddle - R. L.S. No. 1147