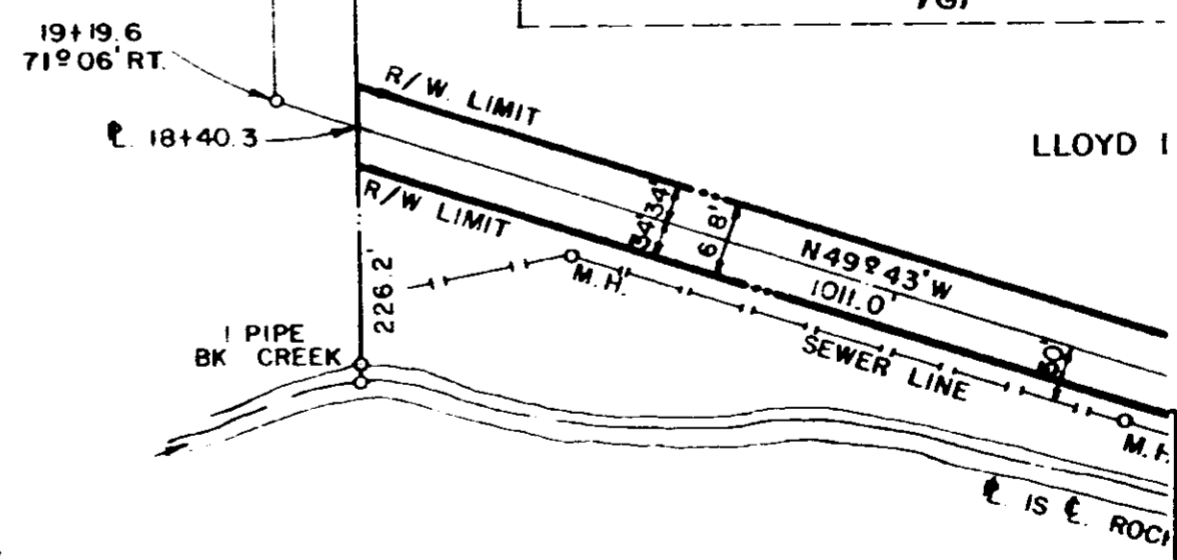


RELIANCE ELECTRIC COMPANY  
"DODGE DIVISION - GREENVILLE PLANT"  
REF. DWG NO. 54-109



DUKE POWER COMPANY  
RELIANCE ELECTRIC COMPANY  
"DODGE DIVISION - GREENVILLE PLANT"  
TAP BENT LOT  
ACQUIRED FROM  
LLOYD D. AUTEN  
AND RIGHT OF WAY FOR TRANSMISSION LINE  
NEAR: GREENVILLE, S.C.  
GREENVILLE COUNTY

H. H. SMITH  
(NOW OR FORMERLY)

SCALE: 1"=200'  
BOOK NO. 1563

JUNE 28, 1977  
FILE NO. 159-76

(CONTINUED ON NEXT PAGE)

T.O. 678

1061

4328 RV-2