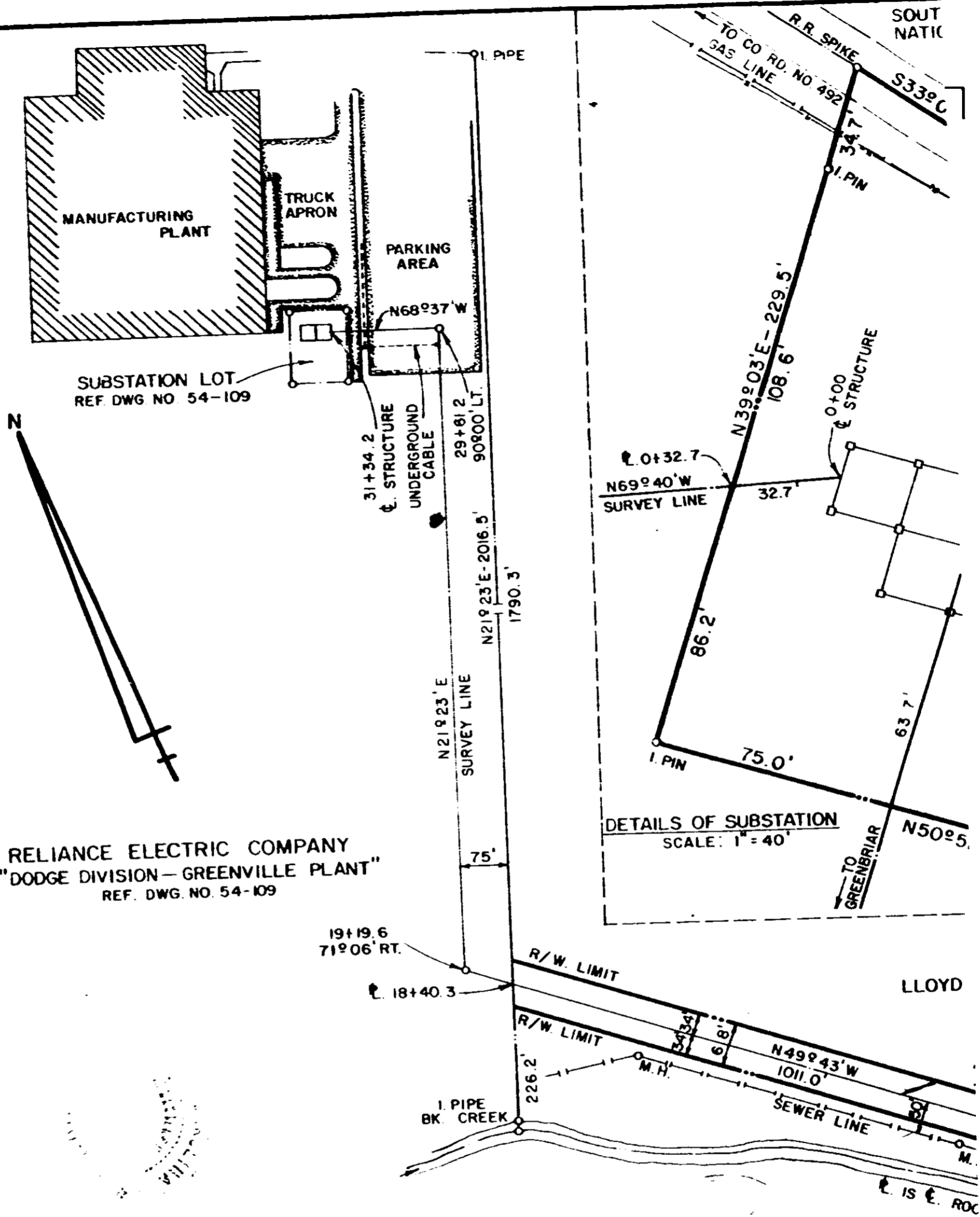


0273



RELIANCE ELECTRIC COMPANY
 "DODGE DIVISION - GREENVILLE PLANT"
 REF. DWG. NO. 54-109

DUKE POWER COMPANY
 RELIANCE ELECTRIC COMPANY
 "DODGE DIVISION - GREENVILLE PLANT"
 TAP BENT LOT
 ACQUIRED FROM
LLOYD D. AUTEN
 AND RIGHT OF WAY FOR TRANSMISSION LINE
 NEAR: GREENVILLE, S.C.
 GREENVILLE COUNTY

H. H. SMITH
 (NOW OR FORMERLY)

SCALE: $1" = 200'$
 BOOK NO. 1563

JUNE 28, 1977
 FILE NO. 159-76

(CONTINUED ON NEXT PAGE)

T.O. 671

4328 RV-21