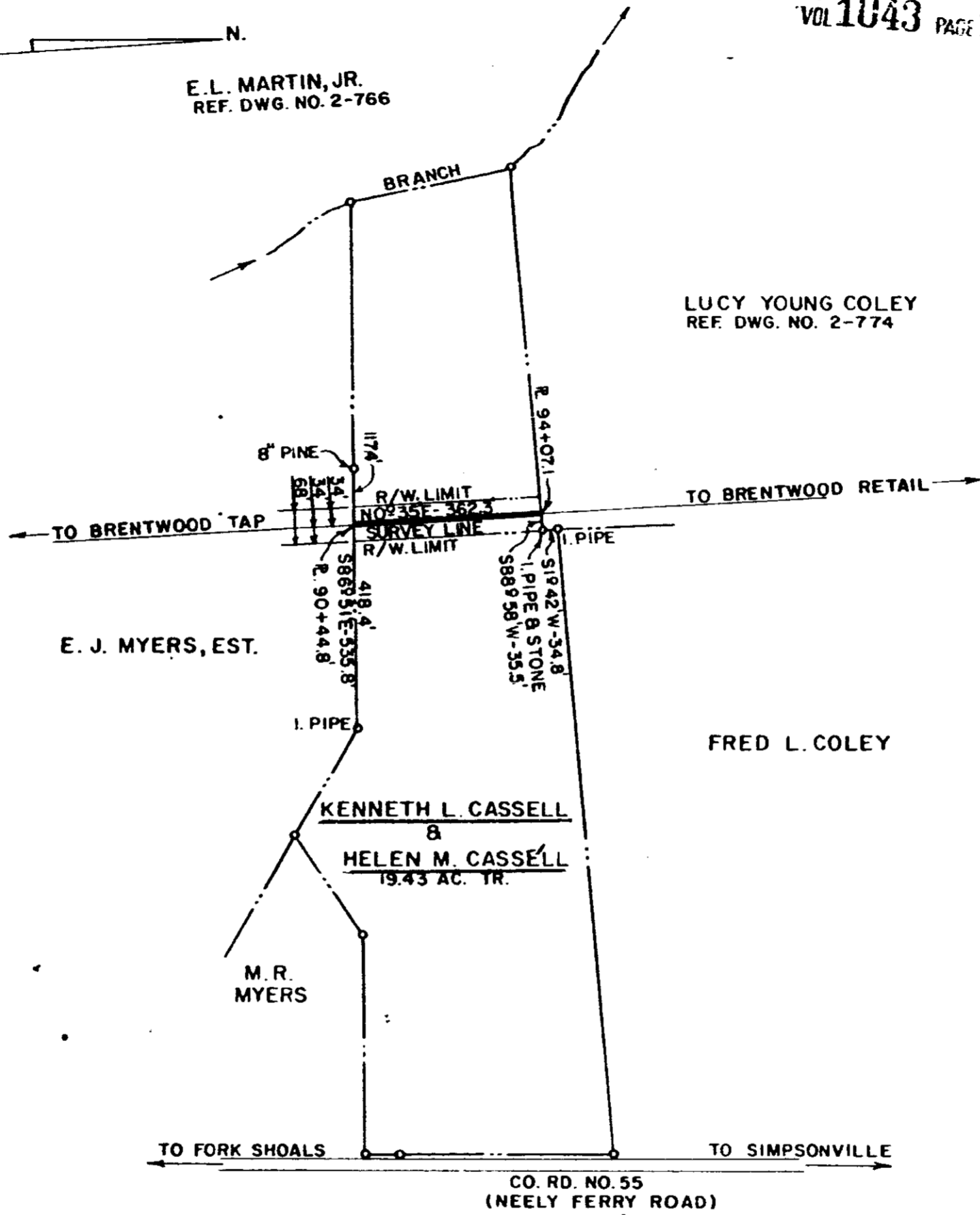




E.L. MARTIN, JR.  
REF. DWG. NO. 2-766

LUCY YOUNG COLEY  
REF. DWG. NO. 2-774



E. J. MYERS, EST.

FRED L. COLEY

KENNETH L. CASSELL  
&  
HELEN M. CASSELL  
19.43 AC. TR.

M.R.  
MYERS

DUKE POWER COMPANY  
BRENTWOOD RETAIL  
TRANSMISSION LINE  
CROSSING PROPERTY OF  
KENNETH L. CASSELL  
AND  
HELEN M. CASSELL

NEAR: SIMPSONVILLE, S.C.  
FAIRVIEW TOWNSHIP  
GREENVILLE COUNTY

7801

332-1-2.2

T.O. NO. 7338-II

SCALE: 1" = 300'  
BOOK NO. 1401

RECORDED SEP 20 '76  
AT 5:06 P.M.

JAN. 30, 1973  
FILE NO. 2-778

4328 W-2