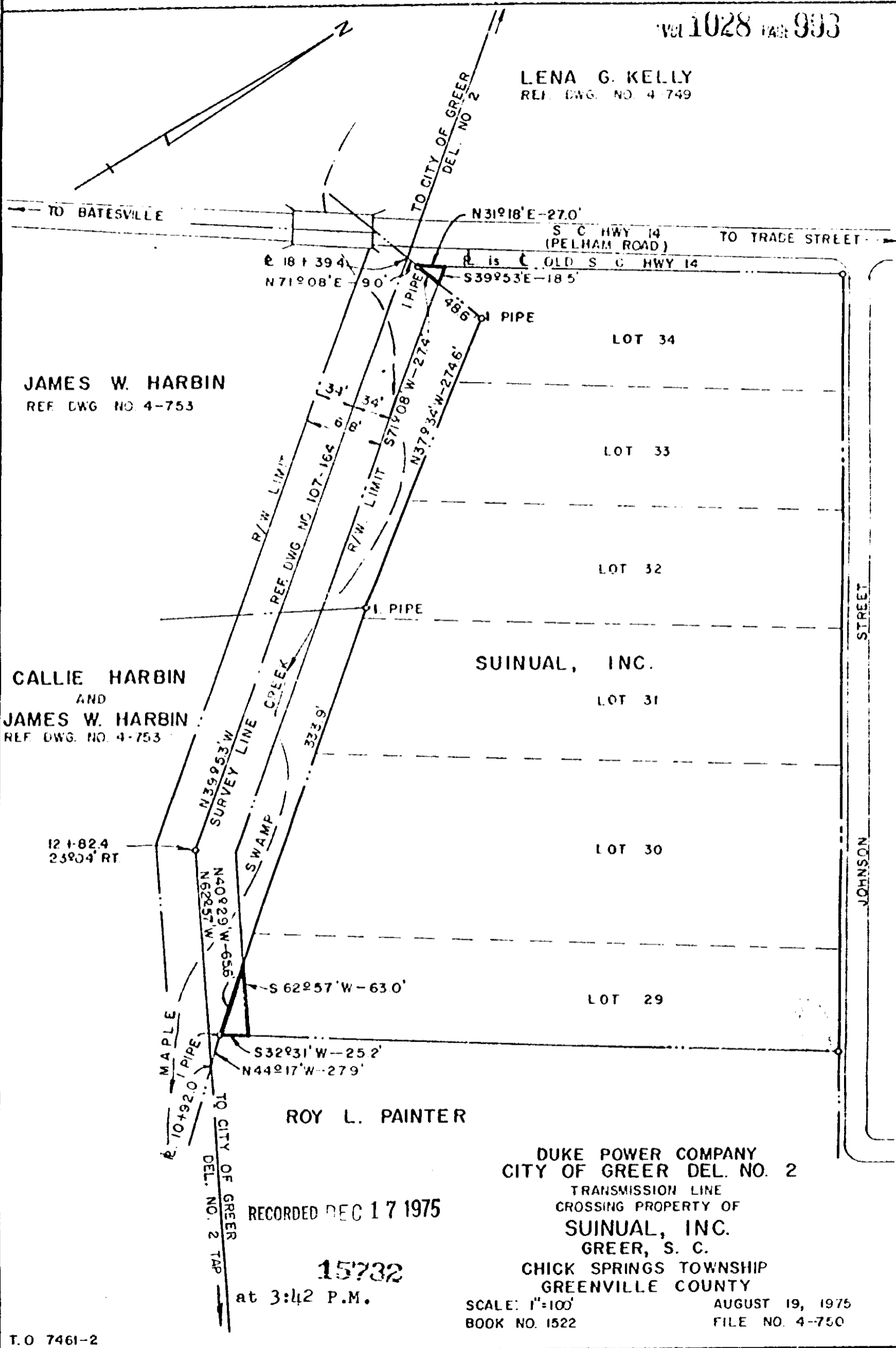


LENA G. KELLY
REI DWG. NO. 4-749



JAMES W. HARBIN
REF DWG NO 4-753

CALLIE HARBIN
AND
JAMES W. HARBIN
REF DWG. NO. 4-753

SUINUAL, INC.
LOT 31

ROY L. PAINTER

DUKE POWER COMPANY
CITY OF GREER DEL. NO. 2
TRANSMISSION LINE
CROSSING PROPERTY OF
SUINUAL, INC.
GREER, S. C.
CHICK SPRINGS TOWNSHIP
GREENVILLE COUNTY

RECORDED DEC 17 1975

15732

at 3:42 P.M.

SCALE: 1"=100'
BOOK NO. 1522

AUGUST 19, 1975
FILE NO. 4-750

T.O 7461-2

4328 RV-2

0.993