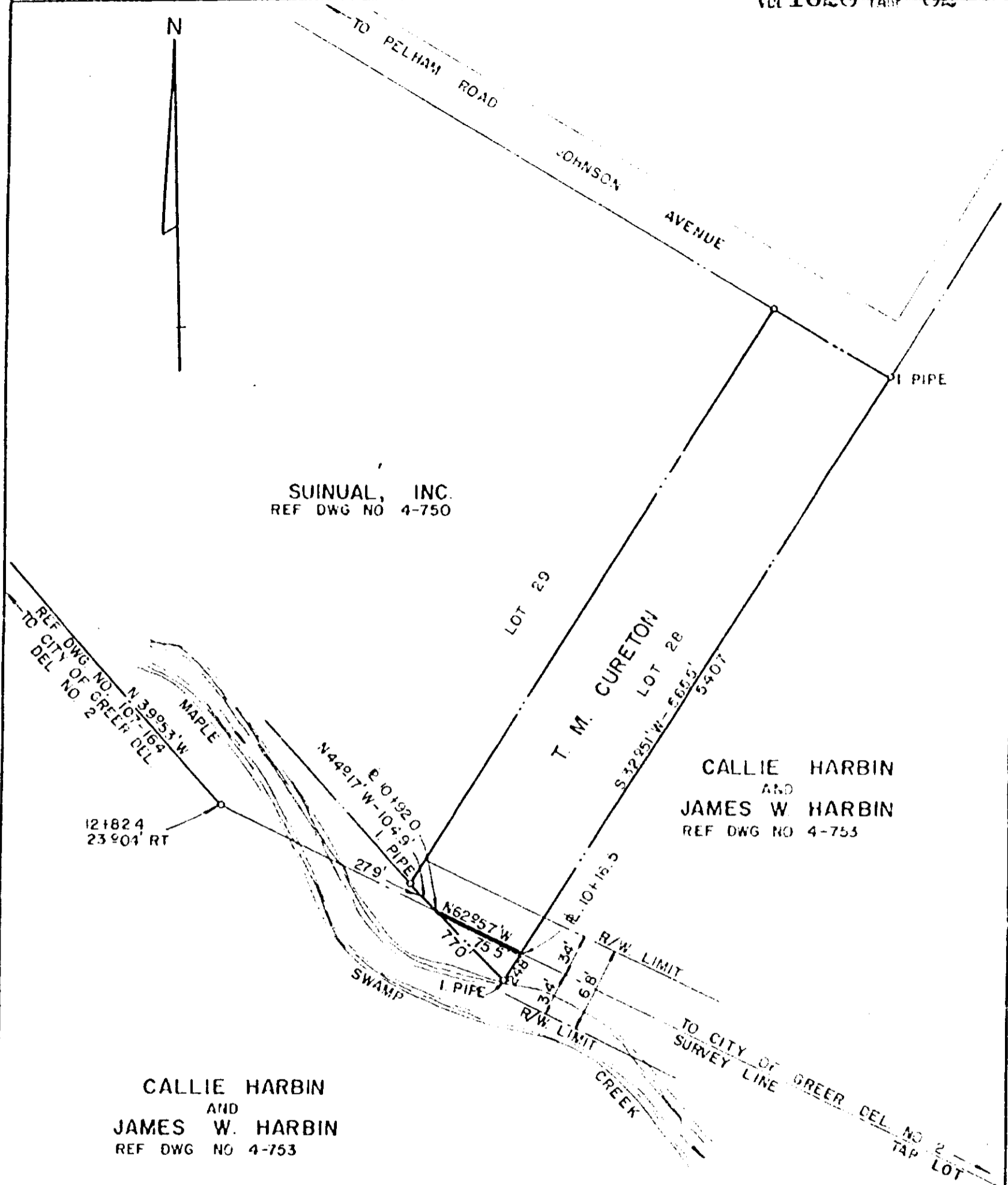




SUINAL, INC.  
REF DWG NO 4-750



121824  
23904' RT

CALLIE HARBIN  
AND  
JAMES W. HARBIN  
REF DWG NO 4-753

CALLIE HARBIN  
AND  
JAMES W. HARBIN  
REF DWG NO 4-753

REF: PLAT OF G B & A B JOHNSON  
SUBDIVISION PLAT BK. Q, PG. 17

DUKE POWER COMPANY  
CITY OF GREER DEL. NO. 2  
TRANSMISSION LINE  
CROSSING PROPERTY OF  
T. M. CURETON  
GREER, S. C.  
CHICK SPRINGS TOWNSHIP  
GREENVILLE COUNTY

RECORDED DEC 3 '75

at 4:52 P.M. 14515

SCALE: 1"=100'  
BOOK NO. 1522

NOVEMBER 5, 1975  
FILE NO. 4-805

T.O. 7461-1-B

4328 RV-2

0082