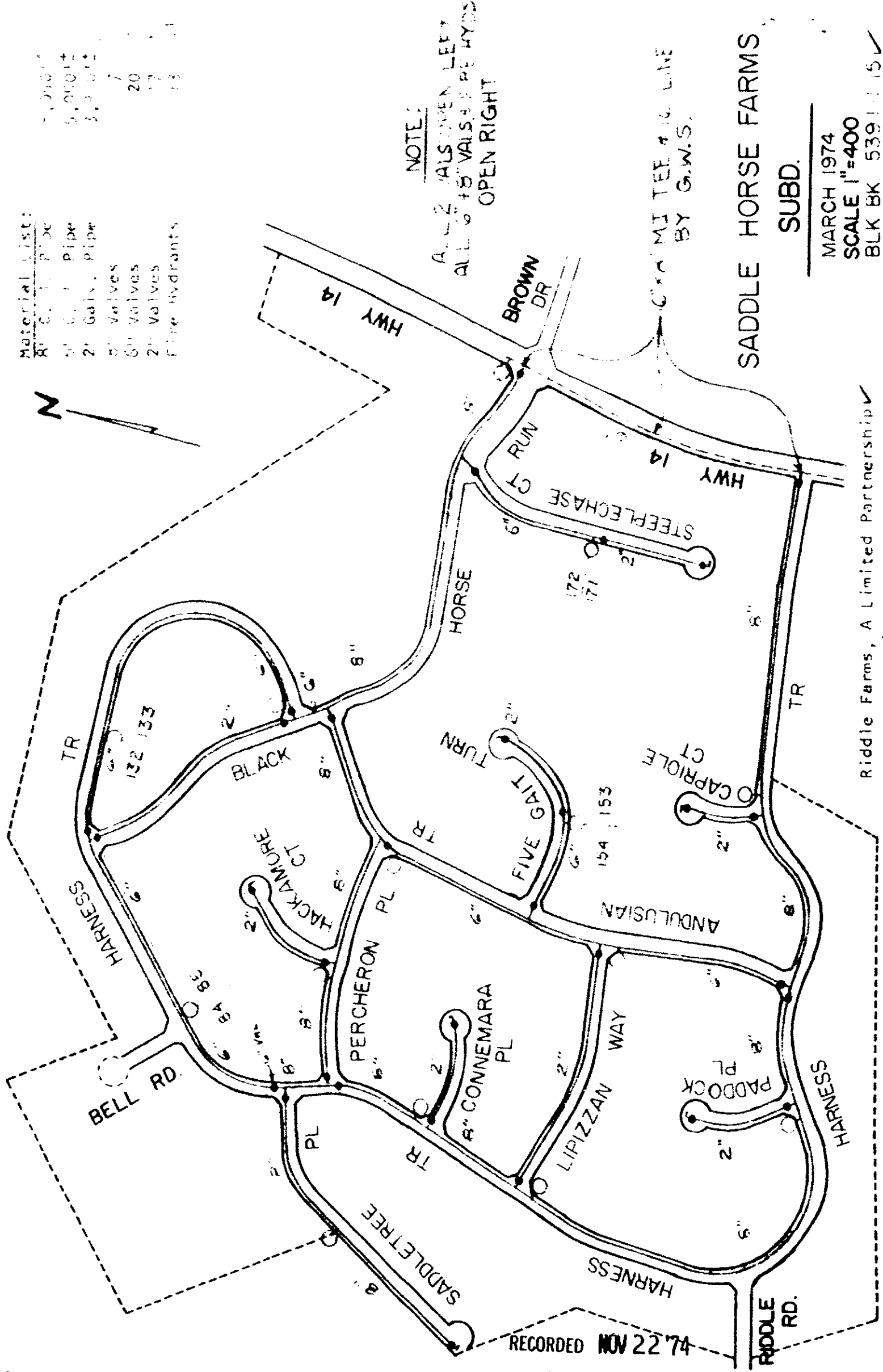


Material List:
 8" C.I. Pipe 1000
 6" C.I. Pipe 1000
 2" Galv. Pipe 200
 2" Valves 7
 6" Valves 20
 2" Valves 17
 Fire Hydrants 13



MARCH 1974
 SCALE 1"=400
 BLK BK 5391115 ✓

Riddle Farms, A Limited Partnership
 to
 Commissioners of Public Works
 of the City of Greenville, S. C.
 November 1, 1974

13095

BOOK 1010 PAGE 722

4328 RV.21

0732