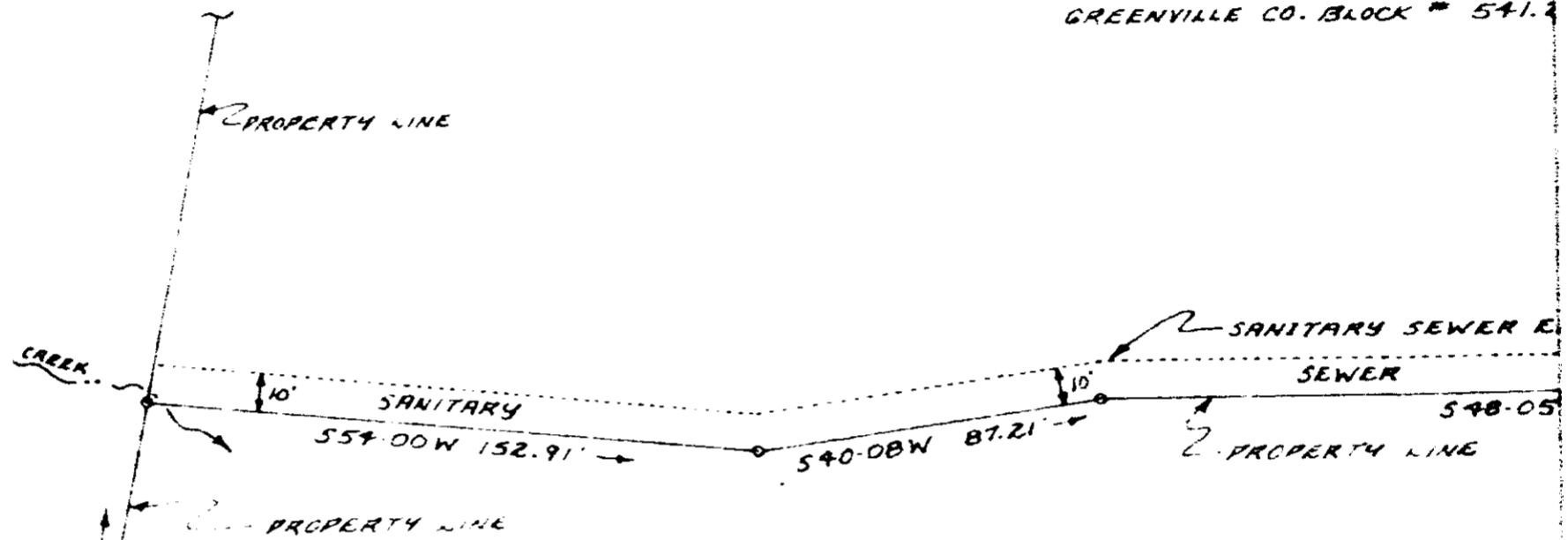


— WALTER KASSUBA REALTY
GREENVILLE CO. BLOCK # 541.2



— NATIONAL ASSETS MANAGEMENT
GREENVILLE CO. BLOCK # 541.2

PLAT OF EASEMENT
THOMAS G. CANNON

GREENVILLE CO., SOUTH CAROLINA
MARCH 22, 1974 SCALE: 1" = 40'

— L.A. CUNNINGHAM
GREENVILLE CO. BLOCK # 541.2 - 1-19

NOTE: 1. PROPERTY LINES SHOWN SURVEYED BY ENWRIGHT ON JULY 18, 1973. NO FIELD SURVEY MADE ON SEWER EASEMENT.
2. IT IS INTENDED FOR THE EASEMENT TO BE 10 FEET IN WIDTH AND PARALLEL TO THE PROPERTY LINE.

A
enwright assoc
ENGINEERS
GREENVILLE, S.C.

(CONTINUED ON NEXT PAGE)

0203

0203