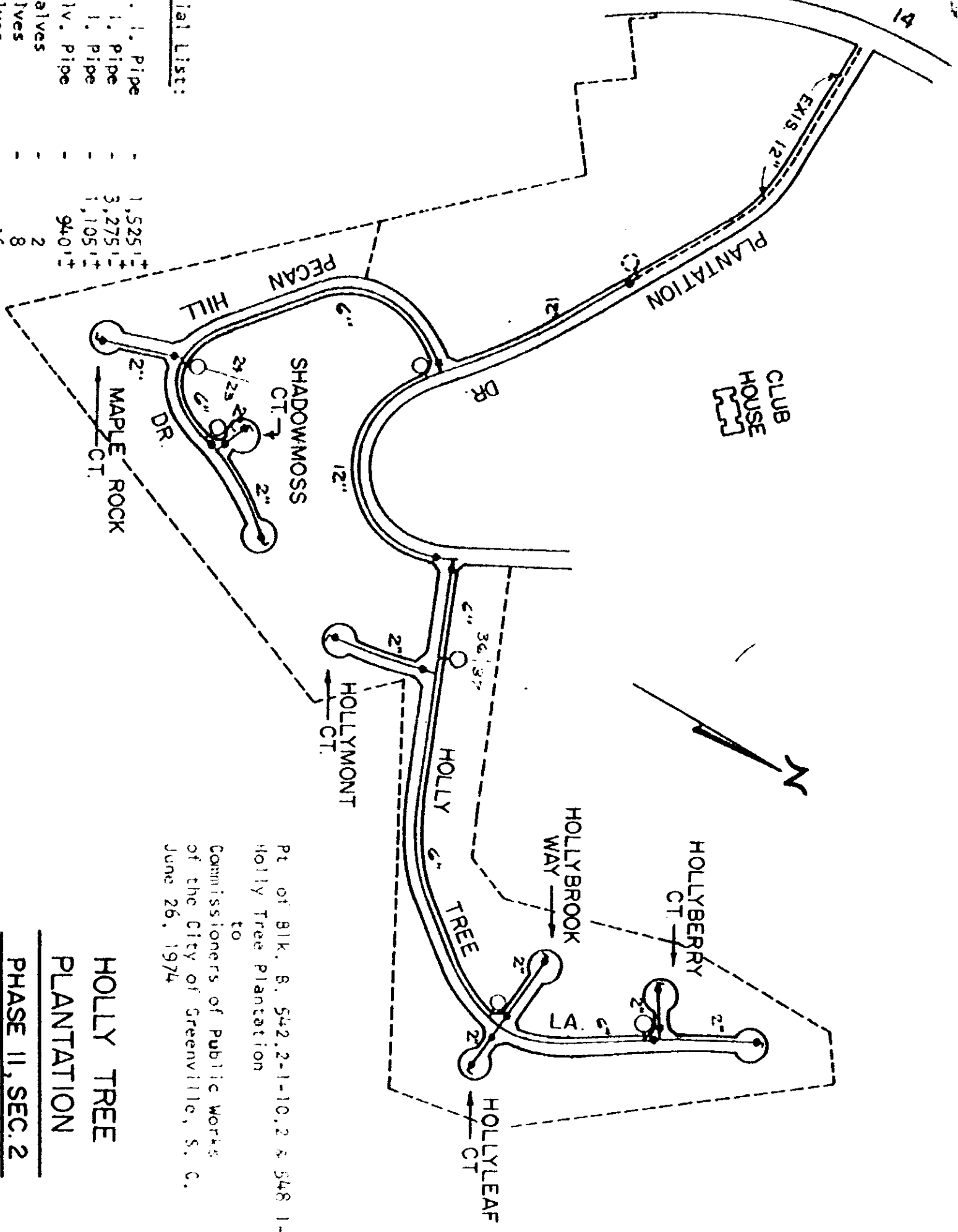


Material List:

12" C. I. Pipe	1,525'±
6" C. I. Pipe	3,275'±
2" C. I. Pipe	1,105'±
2" Galv. Pipe	940'±
12" Valves	2
6" Valves	8
2" Valves	16
Fire Hydrants	6



Pt. of Blk. 8, 542.2-1-10.2 & 548 1-1-29.2  
 Holly Tree Plantation  
 to  
 Commissioners of Public Works  
 of the City of Greenville, S. C.  
 June 26, 1974

**HOLLY TREE  
 PLANTATION**  
**PHASE II, SEC. 2**  
 OCT 1973  
 SCALE 1"=400'

RECORDED JUL 8 '74 622