

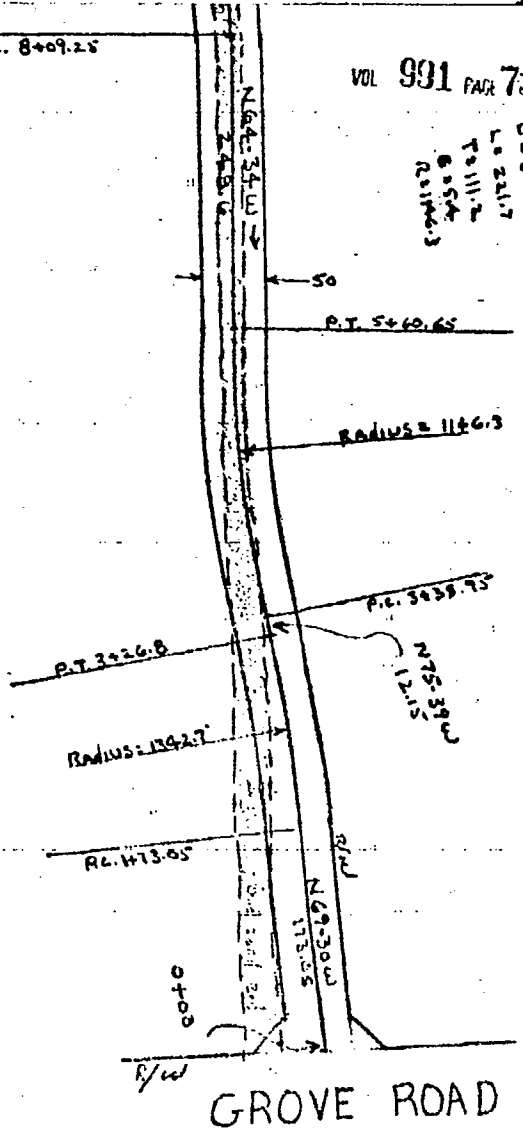
073

4328

VOL 991 PAGE 731

PI 4+50.15
A=116.5'
D=570.0'
L=2417'
T=111.2'
B=54'
R=1166.3'

P.C. 8+09.25



RECORDED JAN 7 '74

17139

202C

PI 2+45.0
A = 60.0'
D = 240.0'
L = 153.75'
T = 46.95'
B = 2.0'
R = 1342.7'

MAP NO. 2
PLAN SHOWING

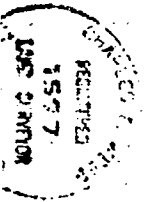
CHAPMAN ROAD RELOCATION

NEAR THE CITY OF GREENVILLE
GREENVILLE COUNTY, S.C.

WEBB SURVEYING & MAPPING CO.

SCALE 1"=100'

JULY 1972



SWR