

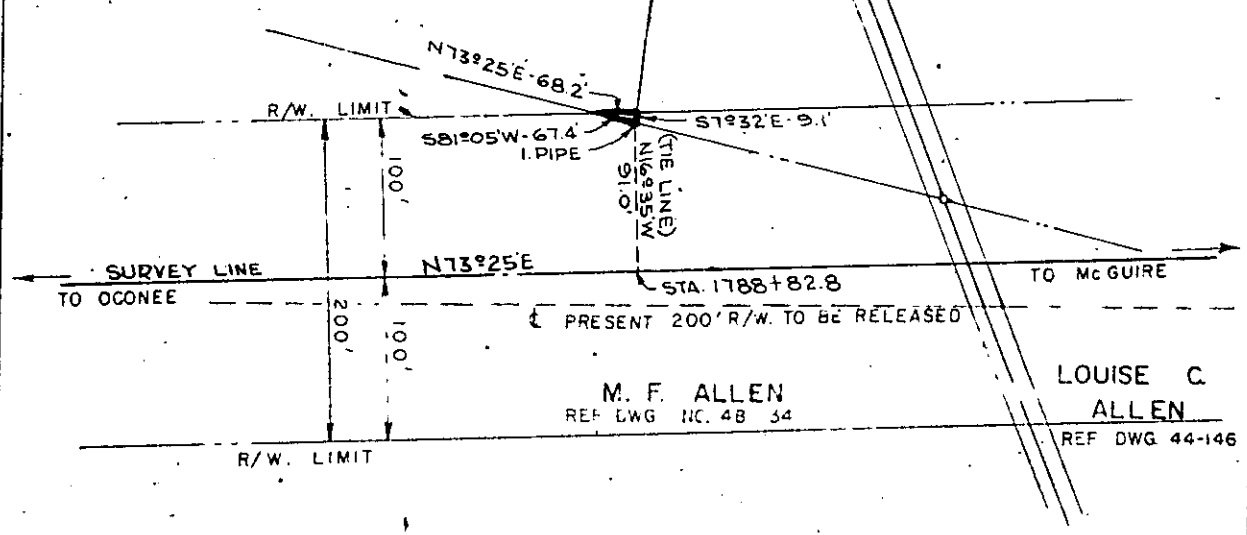


W. H. BAYNE
REF. DWG. NO. 45-47

W. R. EMERY
REF DWG. NO. 45-48

BEAUFORD ALLEN
6.44 AC. TR.

TO HENDERSVILLE
S. C. HWY. NO. 25



M. F. ALLEN
REF DWG. NO. 48-34

LOUISE C.
ALLEN
REF DWG. 44-146

DUKE POWER COMPANY
OCONEE - McGUIRE
TRANSMISSION LINE
CROSSING PROPERTY OF
BEAUFORD ALLEN
NEAR GREENVILLE, S. C.
SALUDA TOWNSHIP
GREENVILLE COUNTY

Plat and Right Of Way Agreement Recorded
December 6, 1972 at 3:17 P.M., # 16615
T. O. 7080-112 & 115-A

SCALE 1" = 100'
BOOK NO. 1132
OCTOBER 24, 1972
FILE NO. 45-47-A