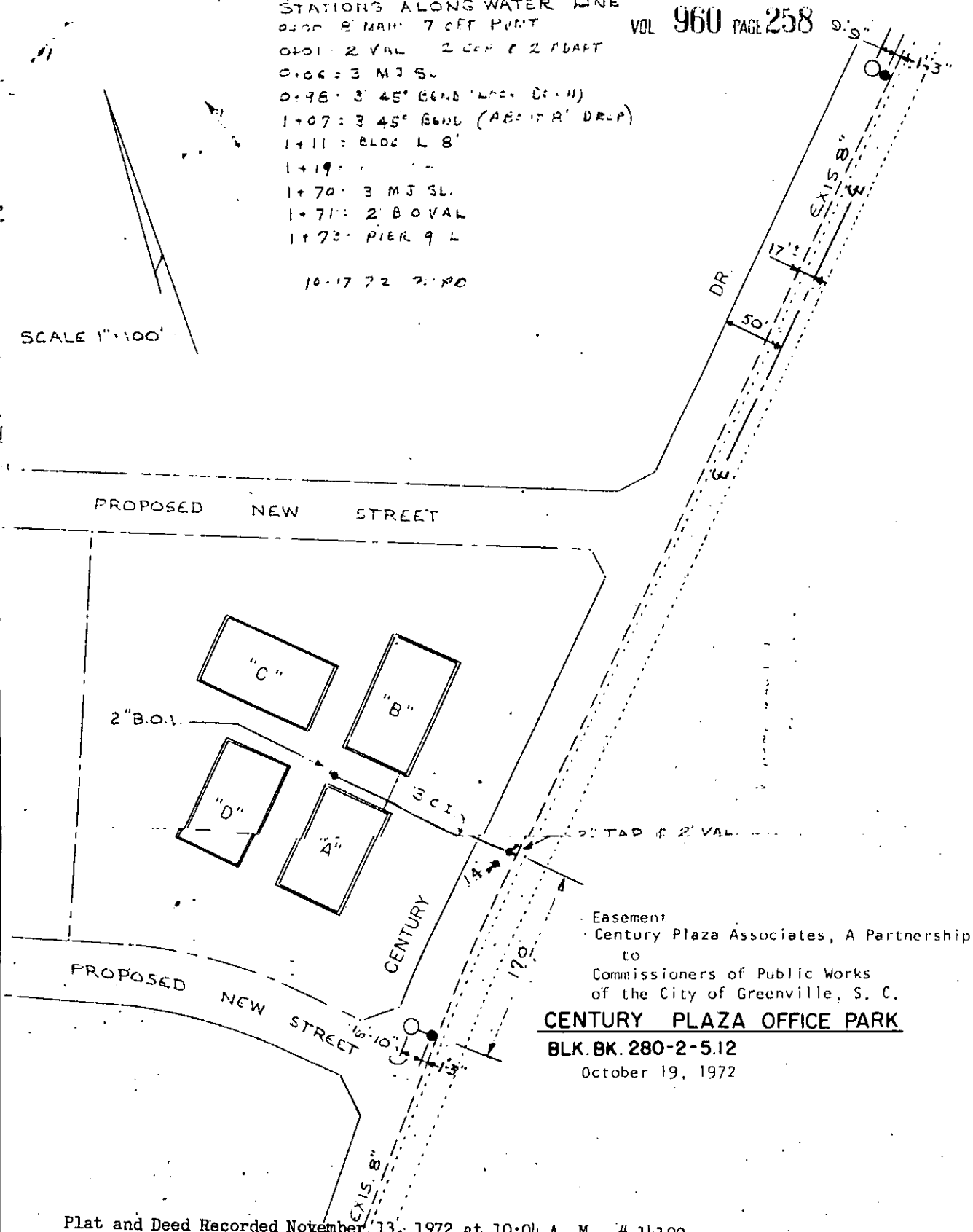


STATIONS ALONG WATER LINE

- 0+00 = 8" MAIN 7' OFF POINT
- 0+01 = 2' VAL 2' CEN & 2' DRAFT
- 0+06 = 3' MJ SL
- 0+45 = 3' 45° BEND (LCC = 0.11)
- 1+07 = 3' 45° BEND (AB = 17' R' DRCP)
- 1+11 = BLOS L 8'
- 1+19 =
- 1+70 = 3' MJ SL
- 1+71 = 2' B OVAL
- 1+72 = PIER 9 L

10-17-72 2:00

SCALE 1"=100'



Easement  
 Century Plaza Associates, A Partnership  
 to  
 Commissioners of Public Works  
 of the City of Greenville, S. C.  
**CENTURY PLAZA OFFICE PARK**  
 BLK. BK. 280-2-5.12  
 October 19, 1972

Plat and Deed Recorded November 13, 1972 at 10:04 A. M., # 14190