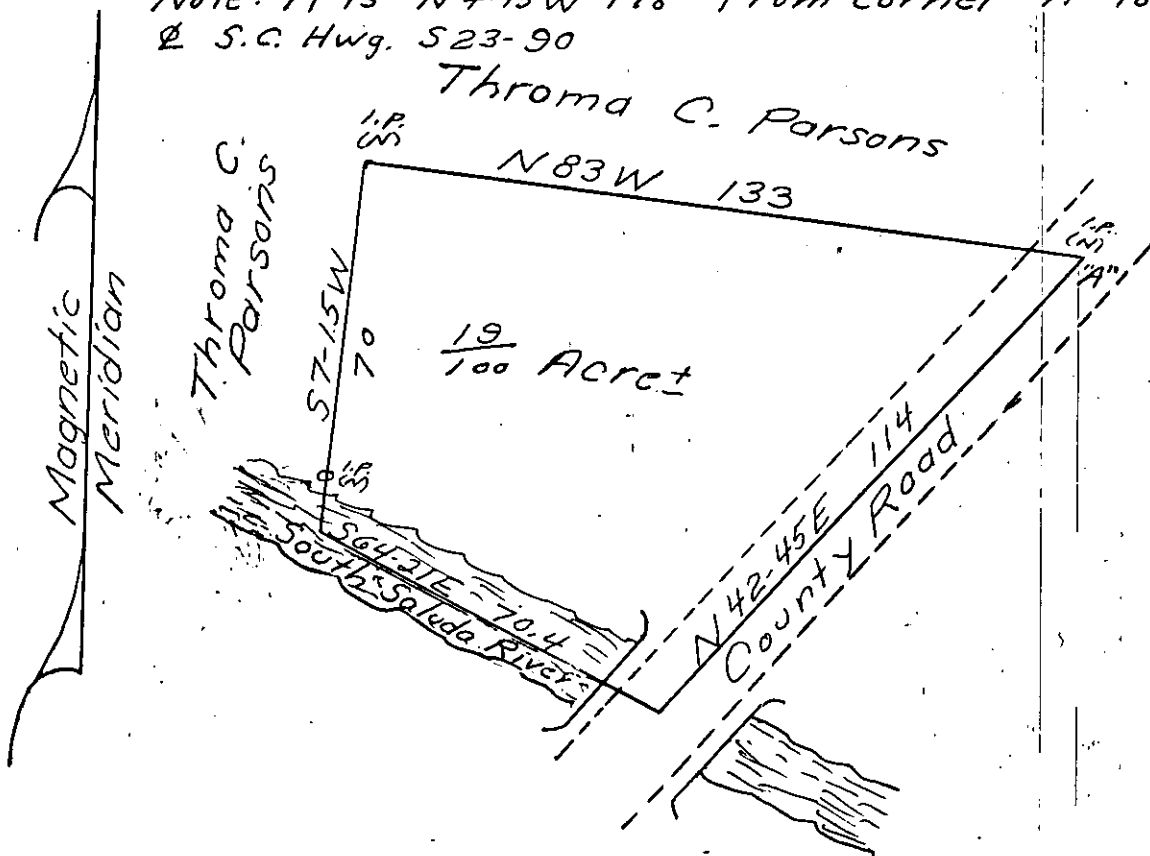


Note: It is N4-15W 178' from corner "A" to
 S.C. Hwy. S23-90



State Of South Carolina
 Greenville County

Plat of property of Gladys F. Mc Grew
 to be deeded to Throma C. Parsons. It
 is located about 4 miles north of
 S.C. Hwy. 8 near Saluda River just off
 S.C. Hwy. S23-90.

Scale: 1" = 30'

July 25, 1972

Walter L. Davis
 Reg. 1261

Plat and Deed Recorded August 8, 1972 at 11:12 A. M., #3832