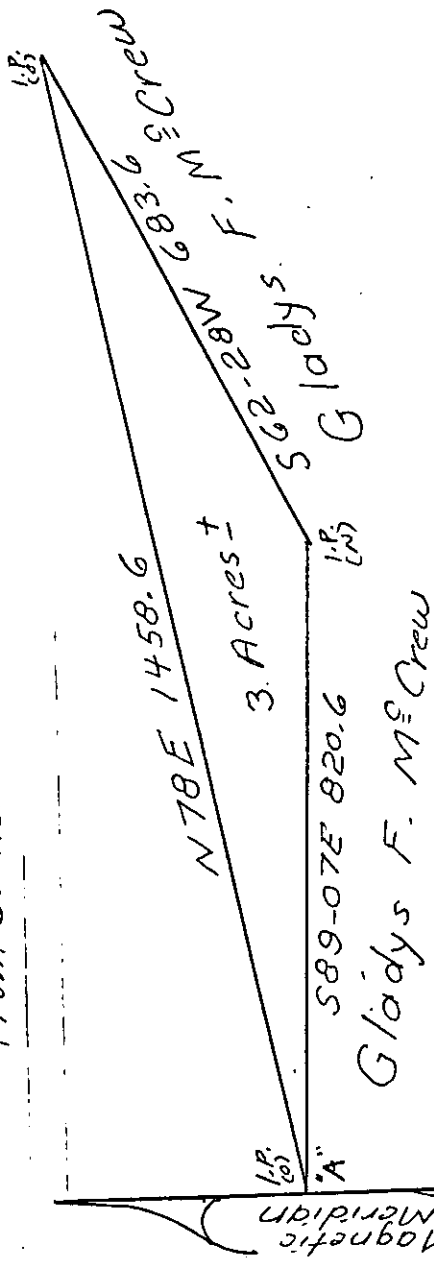


Note: It is 825.5 Duc South to E Hwy. S 23-90 from corner "A"



State Of South Carolina
Greenville County

The plat hereon represents property of Gladys F. Mc Crew to be deeded to
It is located about 4 miles north of S.C. Hwy. 8 and 1/2 mile east of Saluda River. Refer to #25684 recorded April 17, 1962 in Vol. WW at Page 256 in the office of the Clerk Of Court for Greenville County.

Scale: 1" = 300'

Walter L. Davis
Reg. 1261

July 22, 1972