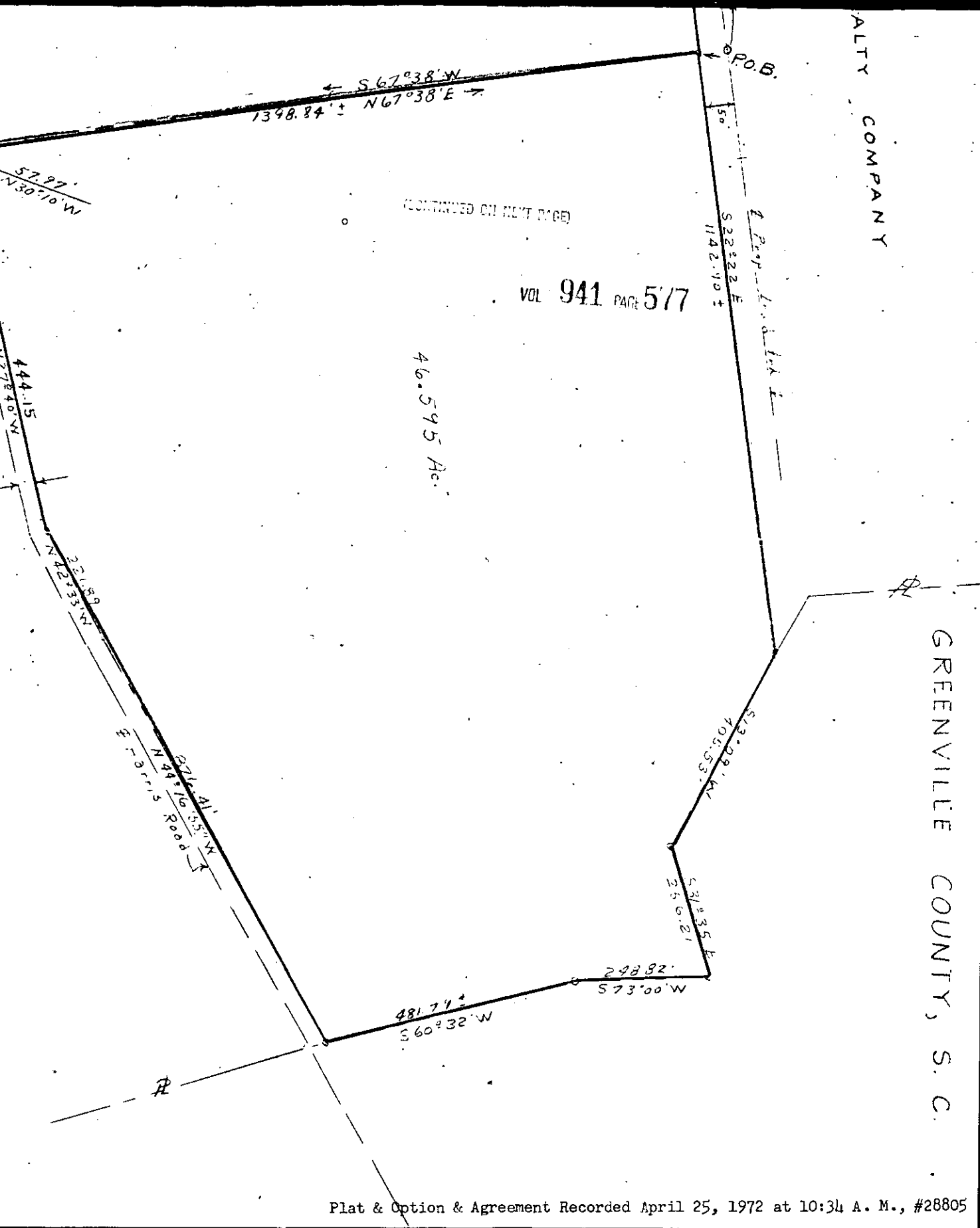


ALTY COMPANY

GREENVILLE COUNTY, S. C.



CONTINUED ON NEXT PAGE

VOL 941 PAGE 5/7

46.595 Ac.

S 67° 38' W
1398.84' ± N 67° 38' E

M.O. 57.97'
N 30° 10' W

444.15'

11278.40' W

221.59' W
223.33' W

Prop. L. & L. E.
N 55° 51' W
1027.19' ±

Prop. L. & L. E.
S 60° 32' W
481.74' ±

573.00' W
560° 32' W

298.82'
573.00' W

531° 35' E
256.21'

512.09' W
705.53'

S 22° 22' E
1142.90' ±

P.O.B.

Plat & Option & Agreement Recorded April 25, 1972 at 10:34 A. M., #28805