

**6' x 8' DOUBLE FACED SIGN**

Formed cast acrylic faces with with embossed letters, decorated on inside surface with acrylic paints

Logo letters fabricated from dark blue acrylic, wrapped with gold edging

Rigidly welded heavy gauge structural frame and raceway around all four sides

Casings of phosphated aluminum extrusion, top-coated with blue Thermo-setting acrylic

Either end removable for service

Five high output lamps (96T12 HO/CW) on 12" centers

One ballast, France Mfg. Co. No. 588-D

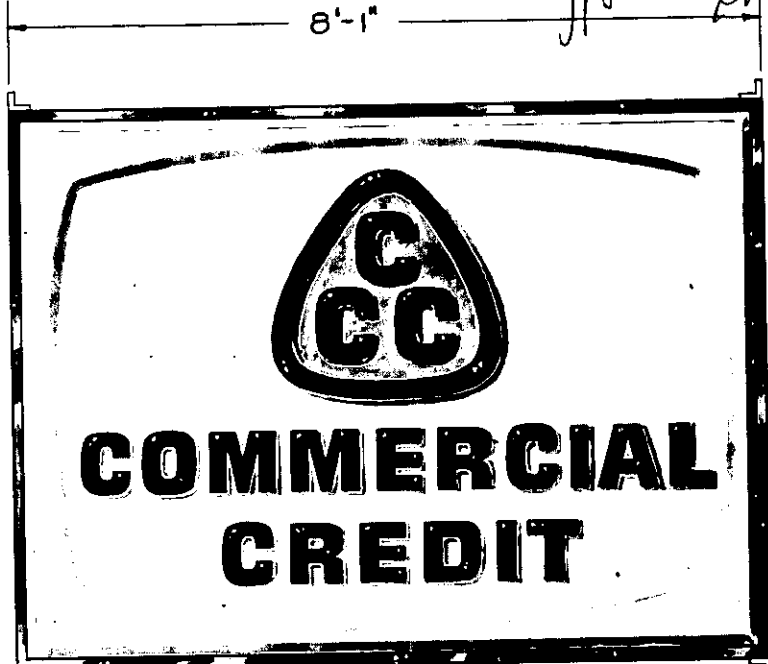
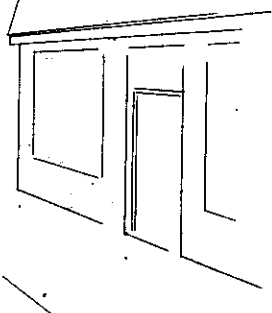
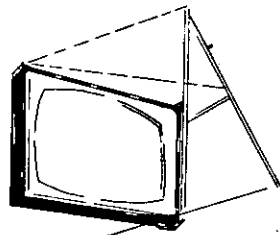
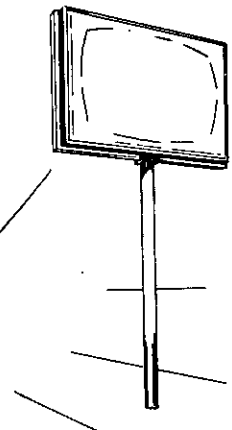
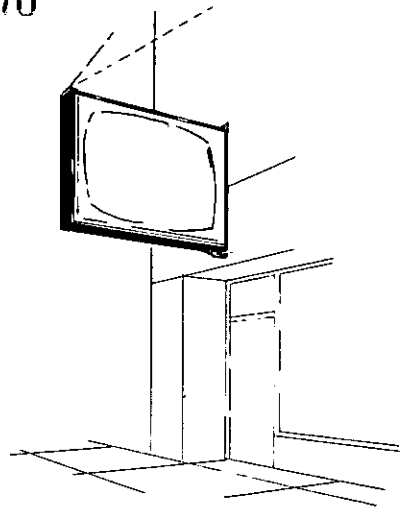
Total electrical load: 4.7 amp. @120 V.A.C.

Total weight: 340 lbs

Exhibit "C" to lease dated June 23, 1971 between Francis Realty, Inc. and Commercial Credit Corporation

Greenville - Pleasantburg Drive, South Carolina

*[Handwritten signatures]*



Lease Recorded July 12th, 1971 at 3:09 P.M. #1114