

S 36°-21'E 679'

...F. SEWER LINE
...CRE WITHIN 12' EASEMENT

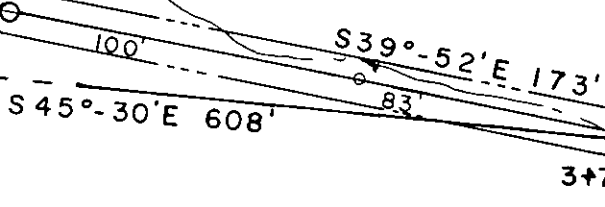
200'

200'

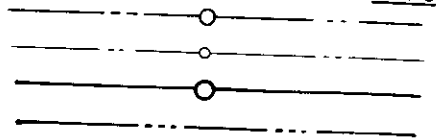
200'

ICH

12' EASEMENT



LEGEND



(CONTINUED ON NEXT PAGE)

OLD PROPERTY BOUNDARIES
OBTAINED FROM REVISED PLAT
OF PART OF LOVE ESTATES,
LOT 70-D TRAVELERS REST, S.C.
DATED FEB. 1940. PLAT LOCATED IN
GREENVILLE COUNTY COURTHOUSE
BOOK K PAGE 31.

EERS, INC.
C.
EG.
O. 1574

TAVE W. BATSON
GREENVILLE COUNTY, S.C.
OWNER

SEWER LINE LOCATION
DRAWING TITLE