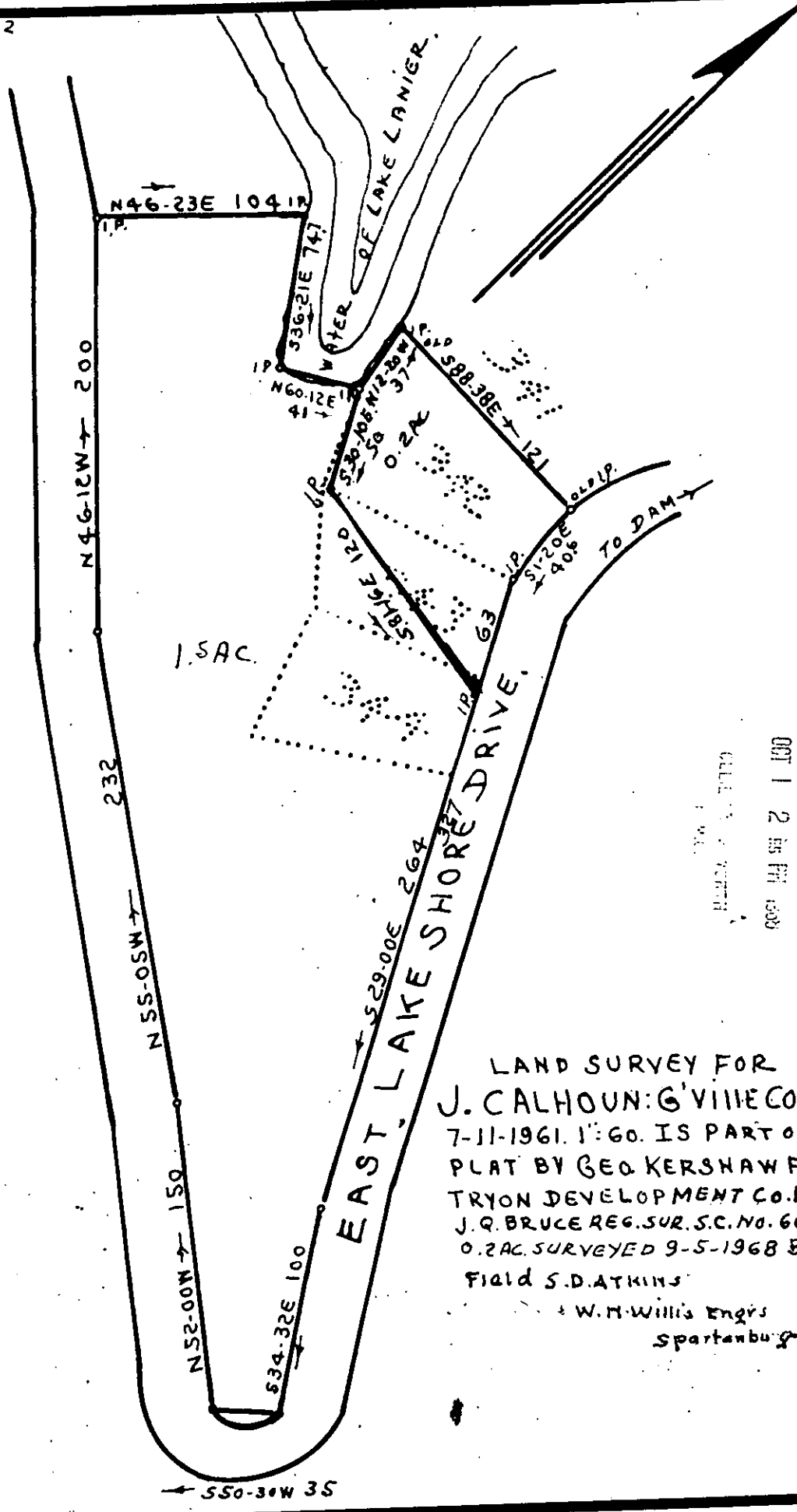


3

D-1-162



OCT 1 2 45 PM 1968
 COLLECTED BY
 S.D. ATKINS

LAND SURVEY FOR
 J. CALHOUN: G'VILLE CO. SC.
 7-11-1961. 1"=60'. IS PART OF
 PLAT BY GEO. KERSHAW FOR
 TRYON DEVELOPMENT CO. 1925.
 J. Q. BRUCE REG. SUR. S.C. NO. 667,
 0.2 AC. SURVEYED 9-5-1968 BY
 FIELD S.D. ATKINS
 W.H. Willis Engrs
 Spartanburg SC

Recorded October 1, 1968 At 2:55 P.M. # 8047

N. YORK M.A. NO. 1888