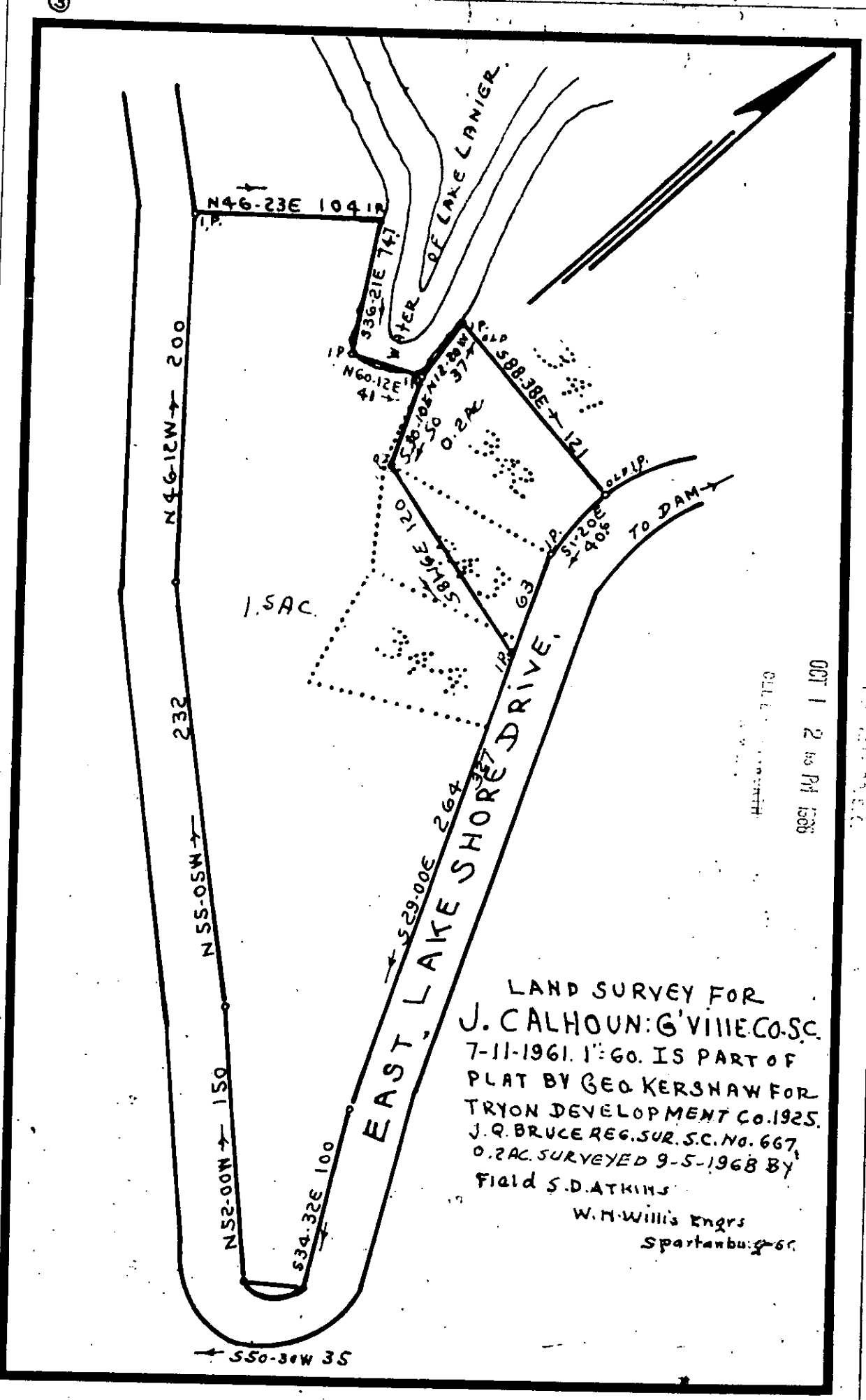


D-1-162

③



OCT 1 2 45 PM 1968

COLLECTED BY

1968

LAND SURVEY FOR  
 J. CALHOUN: G'VILLE CO. SC.  
 7-11-1961. 1:60. IS PART OF  
 PLAT BY GEO. KERSHAW FOR  
 TRYON DEVELOPMENT CO. 1925.  
 J. R. BRUCE REG. SUR. S.C. NO. 667,  
 O.2 AC. SURVEYED 9-5-1968 BY  
 Field S.D. ATKINS  
 W. H. Willis Engrs  
 Spartanburg SC.