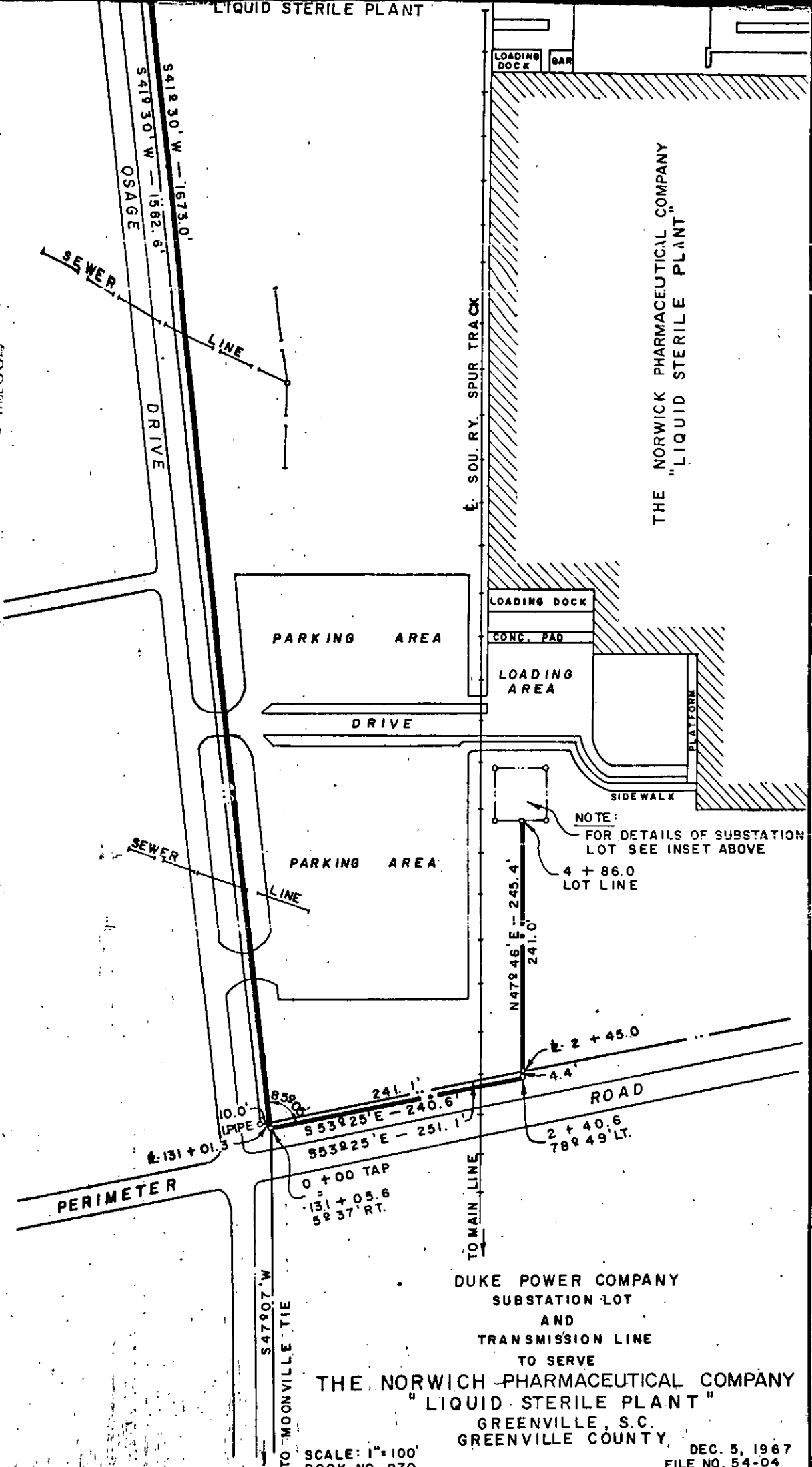


LIQUID STERILE PLANT

BOOK 842 PAGE 602



THE NORWICH PHARMACEUTICAL COMPANY
"LIQUID STERILE PLANT"

NOTE:
FOR DETAILS OF SUBSTATION
LOT SEE INSET ABOVE
4 + 86.0
LOT LINE

DUKE POWER COMPANY
SUBSTATION LOT
AND
TRANSMISSION LINE
TO SERVE
THE NORWICH PHARMACEUTICAL COMPANY
"LIQUID STERILE PLANT"
GREENVILLE, S.C.
GREENVILLE COUNTY.

SCALE: 1" = 100'
BOOK NO. 970

DEC. 5, 1967
FILE NO. 54-04

Recorded April 25, 1968 At 1:44 P.M. # 27767